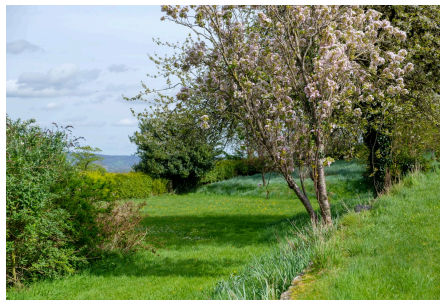


Whitley Head, Banwell

£1,350,000

🛏 8 🚿 4 🚗 5



AN OPPORTUNITY NOT TO BE MISSED. An outstanding eight bedroom Country residence set within grounds of approaching six acres. Constructed in the 1830's as a summer retreat for the then Bishop of Bath and Wells, the property is set in a stunning elevated position on Banwell Hill from which the panoramic views are simply breath-taking. 'The Caves' is situated within the grounds of a site of significant historical interest with longstanding associations with Druidry, it is also home to two incredible caves that were discovered in 1757 & 1825 respectively. There are also several enchanting outbuilding including a Druids Altar, Summer House and Cave House.



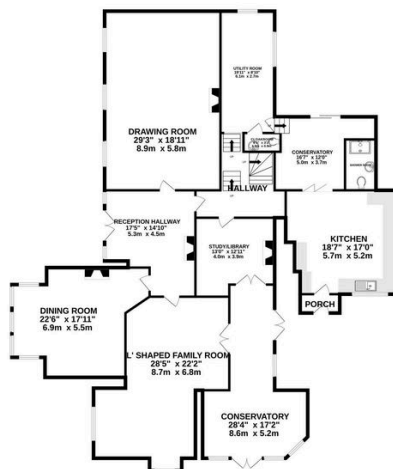
Key Features

- Elegant period home constructed as a summer residence in the 1830's for the then Bishop of Bath and Wells
- Eight bedrooms with four bathrooms (plus ground floor shower room)
- The site of the archaeologically important Banwell Caves (not open to the public)
- Plethora of Period features including stained glass windows, fireplaces and oak flooring
- In need of moderate updating
- Set in approximately six acres of gardens and historical woodland
- Five superb reception rooms including an impressive 31' drawing room
- Several enchanting outbuildings included a Grade II listed Pebble Summer House
- Large triple garage/workshop with plenty of off street parking
- Over 6000 sq ft of accommodation

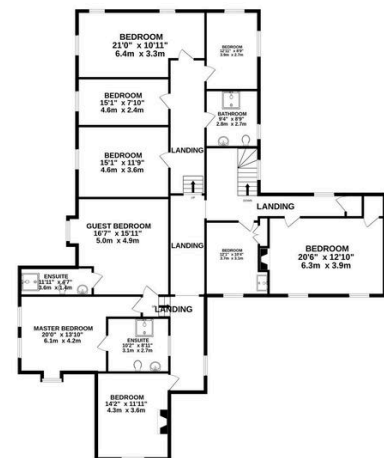
OUTBUILDING
957 sq.ft. (88.9 sq.m.) approx.



GROUND FLOOR
2831 sq.ft. (263.0 sq.m.) approx.



1ST FLOOR
2332 sq.ft. (216.6 sq.m.) approx.



TOTAL FLOOR AREA : 6119 sq.ft. (568.5 sq.m.) approx.

Whilst every attempt has been made to ensure the accuracy of the floorplan contained here, measurements of doors, windows, rooms and any other items are approximate and no responsibility is taken for any error, omission or mis-statement. This plan is for illustrative purposes only and should be used as such by any prospective purchaser. The services, systems and appliances shown have not been tested and no guarantee as to their operability or efficiency can be given.

Made with Metropix ©2024

