

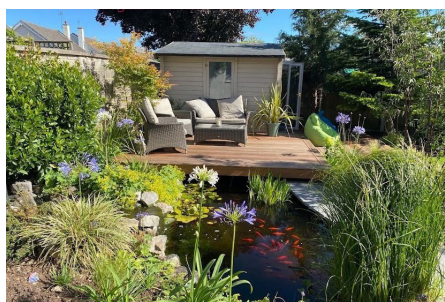


## Ashleigh Crescent, Yatton

Offers Over £530,000

 4  2  2

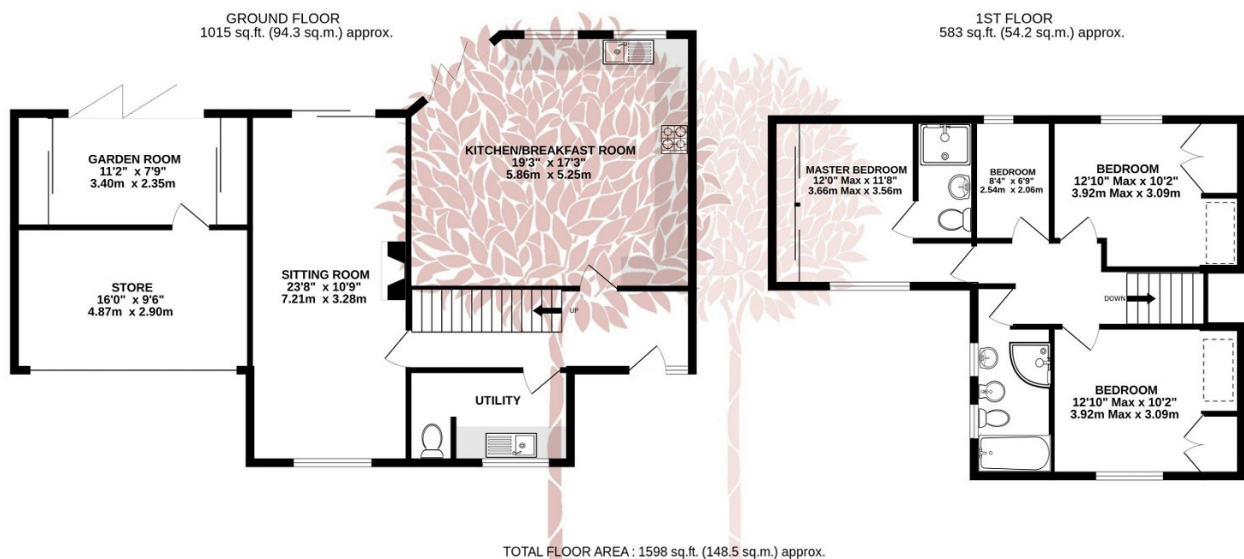


**STUNNING INTERIOR & GARDENS** - An extended detached family home offering lots of accommodation, stunning interior and well-stocked gardens set in the popular village of Yatton. Close to Cadbury Spa and Leisure Centre and 1 min access to train station and the Strawberry Line cycle route.



## Key Features

- Detached and remodelled family home
- Open plan kitchen/breakfast room
- Four well-proportioned bedrooms
- New windows fitted in 2020
- Council Tax Band E
- Walking distance to all village amenities, strawberry line and train station
- Garden room with bi-fold doors
- Set in glorious gardens with well stocked trees, shrubs and pond
- Backwell School catchment area
- EPC C



Whilst every attempt has been made to ensure the accuracy of the floorplan contained here, measurements of doors, windows, rooms and any other items are approximate and no responsibility is taken for any error, omission or mis-statement. This plan is for illustrative purposes only and should be used as such by any prospective purchaser. The services, systems and appliances shown have not been tested and no guarantee as to their operability or efficiency can be given.  
Made with Metropix ©2024

