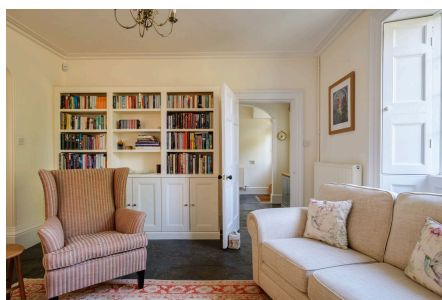


High Street, Blackford

Guide Price £800,000

🛏 4 🚗 2 🛋 4

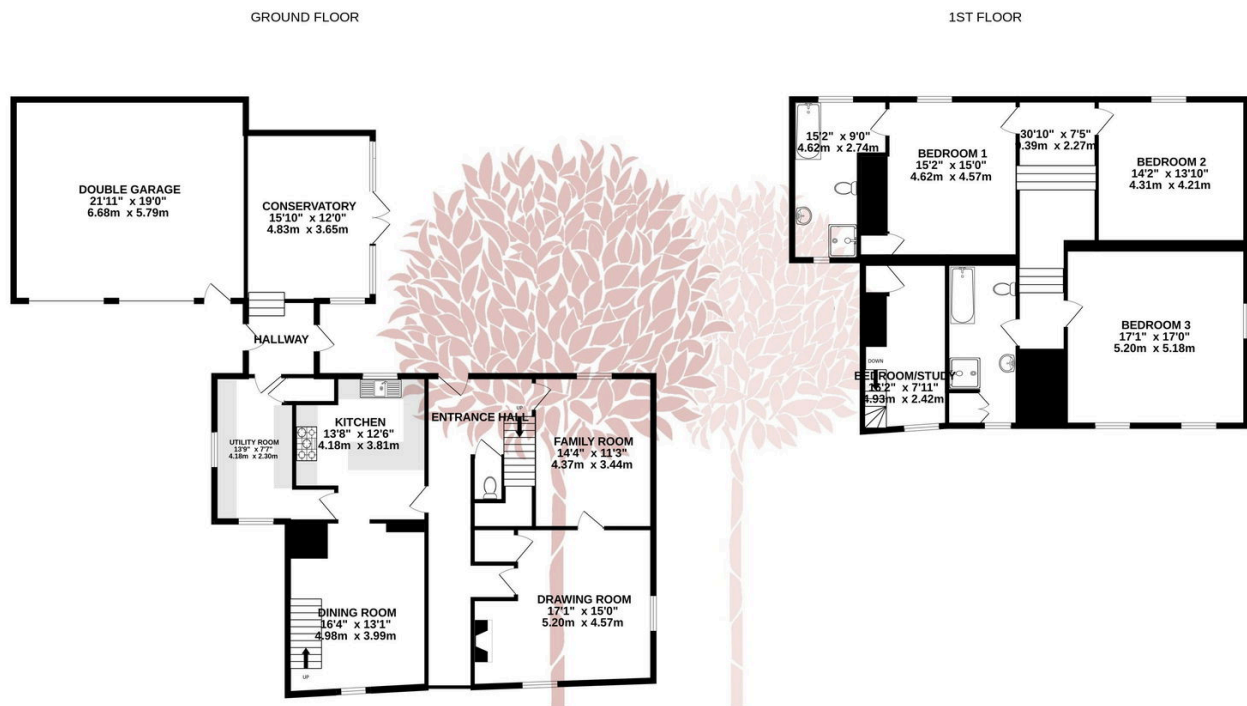


CHARMING COUNTRY HOUSE- This superb Somerset home has a wonderful Georgian extension to the rear and glorious proportions throughout plus a garden room, large double garage/workshop and private driveway.



Key Features

- Four bedroom detached house
- Double garage and off street parking
- Conservatory
- Utility room
- Wood burning stove
- Primary bedroom with ensuite
- Four reception rooms
- Excellent condition
- Period features throughout
- EPC D



TOTAL FLOOR AREA : 3062sq.ft. (284.5 sq.m.) approx.

Whilst every attempt has been made to ensure the accuracy of the floorplan contained here, measurements of doors, windows, rooms and any other items are approximate and no responsibility is taken for any error, omission or mis-statement. This plan is for illustrative purposes only and should be used as such by any prospective purchaser. The services, systems and appliances shown have not been tested and no guarantee as to their operability or efficiency can be given.
Made with Metropix ©2024

