

Templars Way, Shipham

£950,000

🛏 5 🚿 2 🛋 3

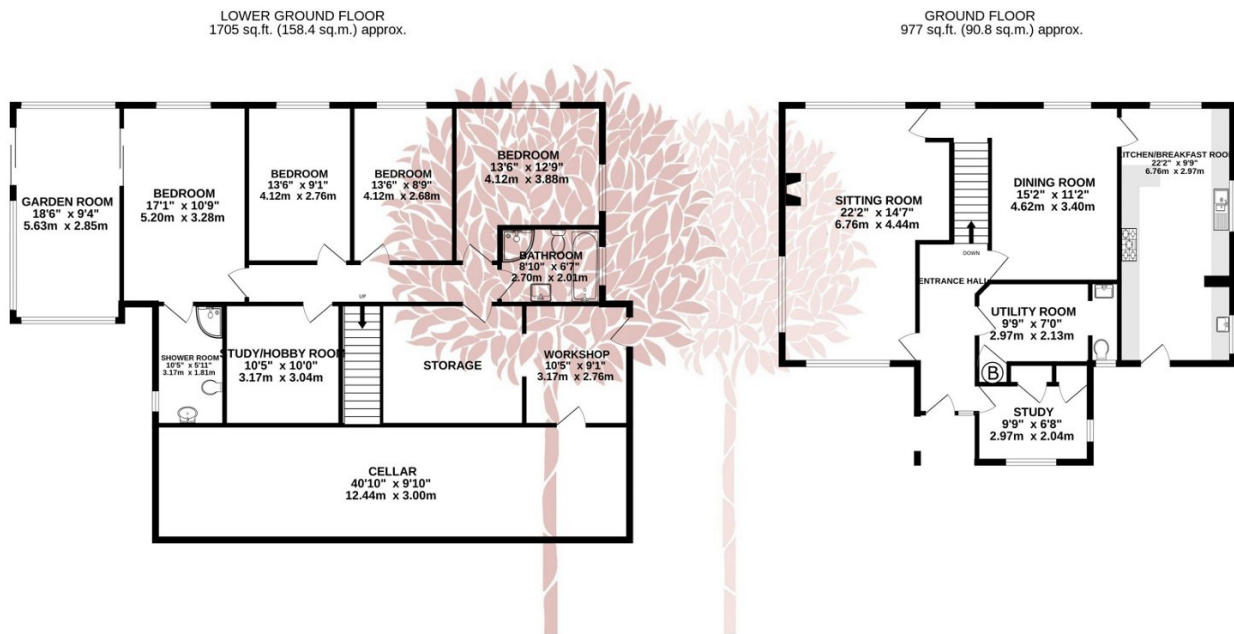


A superb opportunity to purchase a most incredibly positioned detached house, set in an outstanding elevated position, enjoying breath-taking views over the North Somerset countryside towards the Bristol Channel and Welsh Coastline beyond. The property offers over 2600sq ft of versatile accommodation with four reception rooms, four bedrooms and a beautiful landscaped garden with adjoining pony paddock.



Key Features

- Unique detached family home in stunning location
- Four/Five bedrooms
- Ample parking plus large double garage
- Garden Room, numerous ancillary rooms and large cellar
- Epc TBC
- Exceptional panoramic views
- Beautifully landscaped garden and adjoining paddock
- Fantastic further potential
- Over 2600 sq ft of accommodation and 1.4 acre plot
- Council Tax Band F



TOTAL FLOOR AREA : 2682 sq.ft. (249.2 sq.m.) approx.

Whilst every attempt has been made to ensure the accuracy of the floorplan contained here, measurements of doors, windows, rooms and any other items are approximate and no responsibility is taken for any error, omission or mis-statement. This plan is for illustrative purposes only and should be used as such by any prospective purchaser. The services, systems and appliances shown have not been tested and no guarantee as to their operability or efficiency can be given.
Made with Metropix ©2024

