

Rosedale, Stanton Drew

£350,000

3 1 1



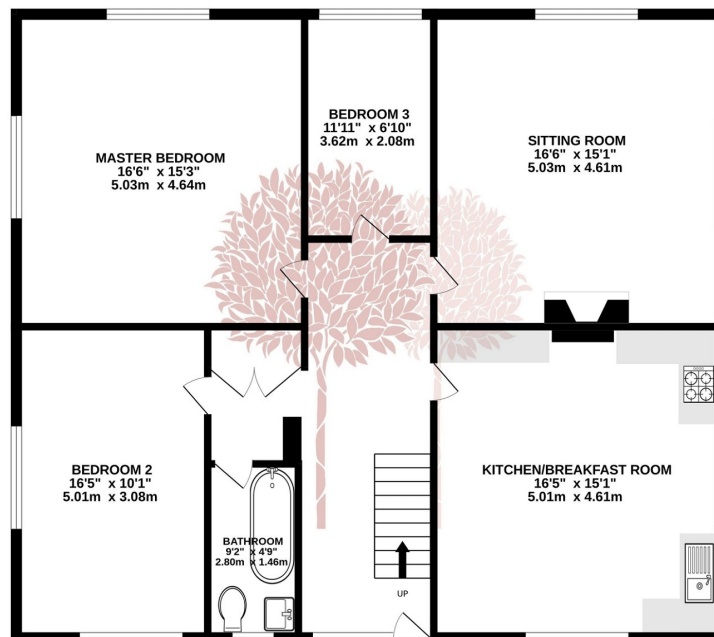
GLORIOUS COUNTRYSIDE VIEWS - Comprising of the entire top floor of this beautiful Grade II listed Georgian residence, with beautiful views and stylish accommodation is this three bedroom apartment. The property is offered with its own garden, off street parking, and garage.



Key Features

- Grade II listed Georgian top floor apartment
- Period features
- Off street parking and garage
- Walks and amenities on the doorstep
- Council tax band- C
- Stylish and well presented accommodation
- Private, well stocked garden
- Countryside views
- EPC Not required

1ST FLOOR
1213 sq.ft. (112.7 sq.m.) approx.



TOTAL FLOOR AREA: 1213 sq.ft. (112.7 sq.m.) approx.
Whilst every attempt has been made to ensure the accuracy of the floorplan contained here, measurements of doors, windows, rooms and any other items are approximate and no responsibility is taken for any error, omission or misstatement. This plan is for illustrative purposes only and should be used as such by any prospective purchaser. The services, systems and appliances shown have not been tested and no guarantee as to their operability or efficiency can be given.
Made with Metropix ©2024

