

debbie fortune

ESTATE AGENTS

Elmsleigh Road, Weston-super-Mare

£800,000

🛏 5 🚿 2 🚺 4

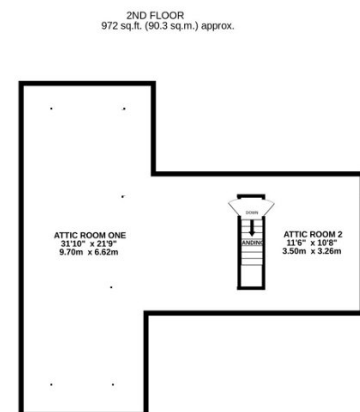
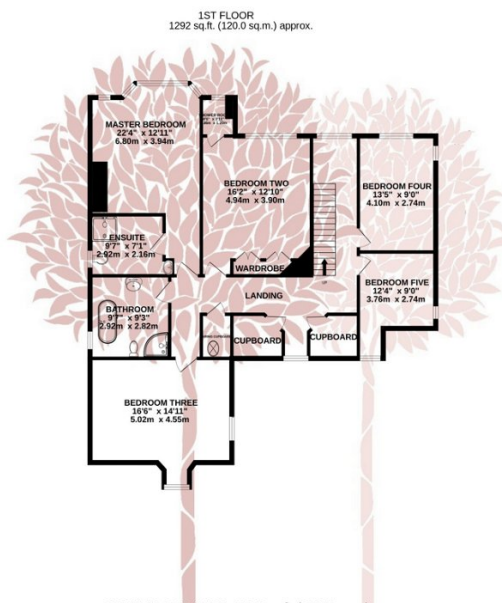
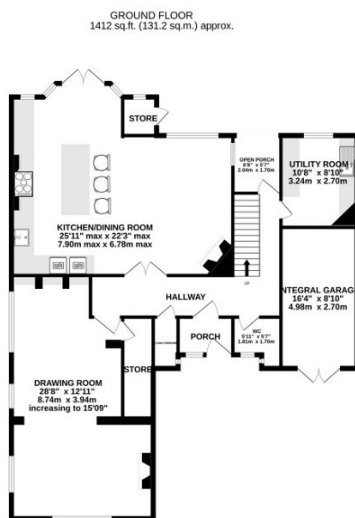


AN ELEGANT and beautifully presented five bedroom detached house constructed in 1926 in the distinctive arts and crafts style of Edwin Lutyens. 'Aldwick' is set in one of the towns most desirable roads with the coast and local amenities all within easy reach.



Key Features

- Elegant 1920's detached family home
- Beautifully presented accommodation throughout
- A wonderful blend of period features complimented by luxurious modern refinements
- Exceptional kitchen/dining/family room, plus separate 28' drawing room
- Five superbly appointed bedrooms, including master with en suite, chic family bathroom and ground floor cloakroom
- Huge attic space with exceptional potential to create further rooms (subject to necessary consents)
- Enchanting south/west facing landscaped rear garden and pretty front garden
- Garage, ample off street parking and just a short walk to the beach, perfectly positioned for amenities/transport routes
- Council Tax band G
- EPC rating D



TOTAL FLOOR AREA: 3676 sq.ft. (341.5 sq.m.) approx.

Whilst every attempt has been made to ensure the accuracy of the floorplan contained here, measurements of doors, windows, rooms and any other items are approximate and no responsibility is taken for any error, omission or mis-statement. This plan is for illustrative purposes only and should be used as such by any prospective purchaser. The services, systems and appliances shown have not been tested and no guarantee as to their operability or efficiency can be given.
Made with Metropix ©2023

