

debbie fortune

ESTATE AGENTS

Swellwood, Shipham

£895,000

🛏 5 🚿 3 🚗 2

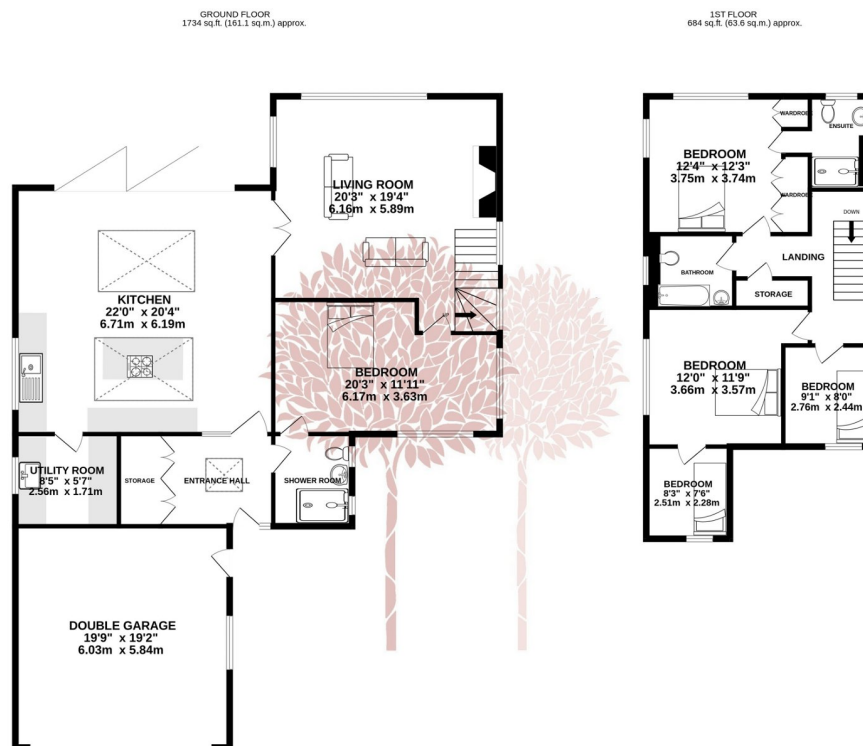


A beautifully remodeled 4/5 bedroom family home situated in a private yet central village location with outstanding views, large grounds circa 0.8 acre, double garage and off street parking.



Key Features

- Extended detached family home
- Far reaching views with stunning sunsets
- Country side walks on the doorstep...
- Double garage and gated off street parking
- Beautiful grounds circa 0.8 acre including wild meadow, mature flower borders and a vegetable patch
- Architecturally remodelled to incorporate plenty of natural light
- Located in the Mendip Area of Outstanding Natural Beauty
- Electric car charging point
- Council Tax Band F
- EPC- C



TOTAL FLOOR AREA: 2418 sq.ft. (224.6 sq.m.) approx.

Whilst every attempt has been made to ensure the accuracy of the floorplan contained here, measurements of doors, windows, rooms and any other items are approximate and no responsibility is taken for any error, omission or mis-statement. This plan is for illustrative purposes only and should be used as such by any prospective purchaser. The services, systems and appliances shown have not been tested and no guarantee as to their operability or efficiency can be given.

Made with Metropix ©2023

