

Kewstoke Road, Weston-super-Mare

£665,000

🛏 4 🚗 4 🚗 4

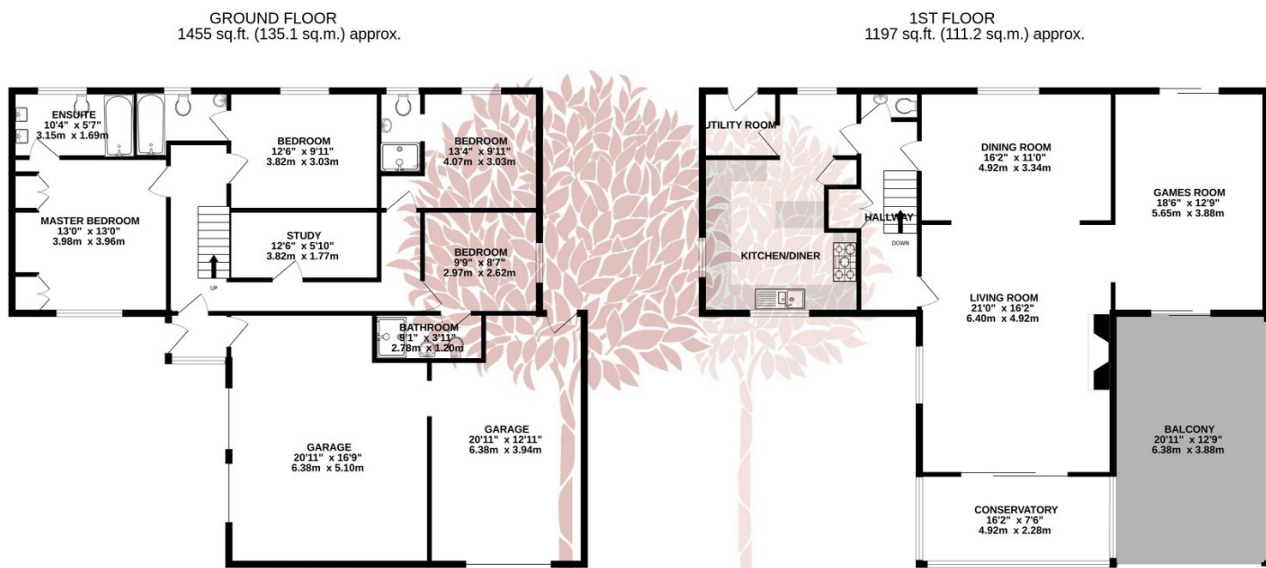


STUNNING PANORAMIC VIEWS - This unique four-bedroom detached house occupying an enviable hillside position in Kewstoke. This reversed accommodation home has its principal reception and living spaces on the first floor in order to take full advantage of the incredible coastal outlook, over the pretty village and out towards the Bristol Channel and Welsh coastline beyond.



Key Features

- Wonderfully positioned individual modern home
- Four en-suite bathrooms
- Exceptional first floor living/entertaining space perfect for family buyers
- Front and rear terraces with conservatory
- EPC C
- Breathtaking views over the North Somerset coast towards Wales
- Large triple garage/undercroft
- Well appointed kitchen/breakfast room
- No onward chain
- Council Tax Band F



TOTAL FLOOR AREA : 2651 sq.ft. (246.3 sq.m.) approx.

Whilst every attempt has been made to ensure the accuracy of the floorplan contained here, measurements of doors, windows, rooms and any other items are approximate and no responsibility is taken for any error, omission or mis-statement. This plan is for illustrative purposes only and should be used as such by any prospective purchaser. The services, systems and appliances shown have not been tested and no guarantee as to their operability or efficiency can be given.
Made with Metropix ©2023

