

Mendip Road, Yatton

£350,000

3 1 1



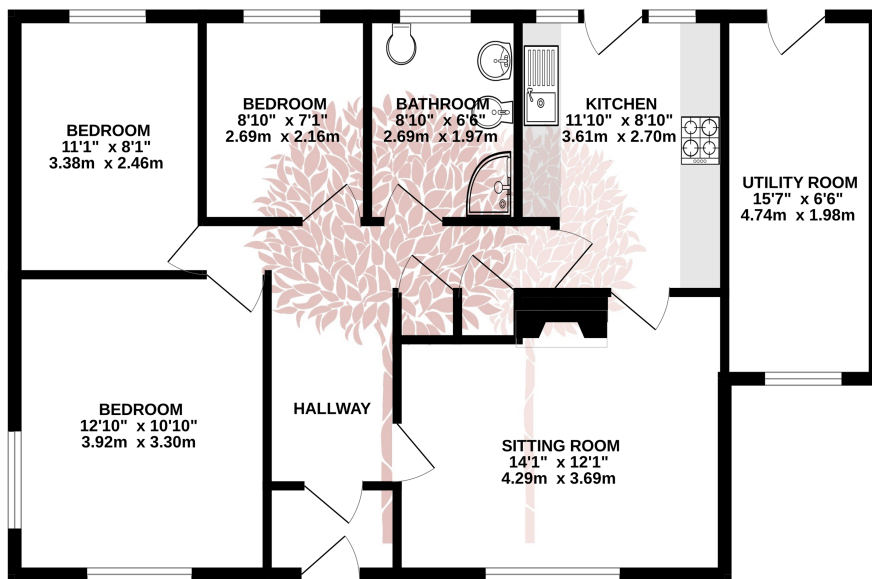
DETACHED BUNGALOW - A wonderfully positioned three bedroom detached bungalow situated in a lovely corner plot position, and enjoying easy access to local amenities.



Key Features

- Generous three bedroom detached bungalow
- Detached double garage
- Close to excellent local amenities and schools
- No onward chain
- EPC rating D
- Lovely corner plot position with pretty garden
- Plenty of potential to improve/modernise
- Light and airy sitting room
- Council Tax band C
-

GROUND FLOOR
823 sq.ft. (76.5 sq.m.) approx.



TOTAL FLOOR AREA: 823 sq.ft. (76.5 sq.m.) approx.

Whilst every attempt has been made to ensure the accuracy of the floorplan contained here, measurements of doors, windows, rooms and any other items are approximate and no responsibility is taken for any error, omission or mis-statement. This plan is for illustrative purposes only and should be used as such by any prospective purchaser. The services, systems and appliances shown have not been tested and no guarantee as to their operability or efficiency can be given.
Made with Metropix ©2023

