



Abbeville Road, SW4

£425,000

A fully refurbished freehold home located in the heart of the Abbeville Village. Accommodation includes an open plan kitchen, a reception with ample space for dining, a double bedroom and a modern bathroom.

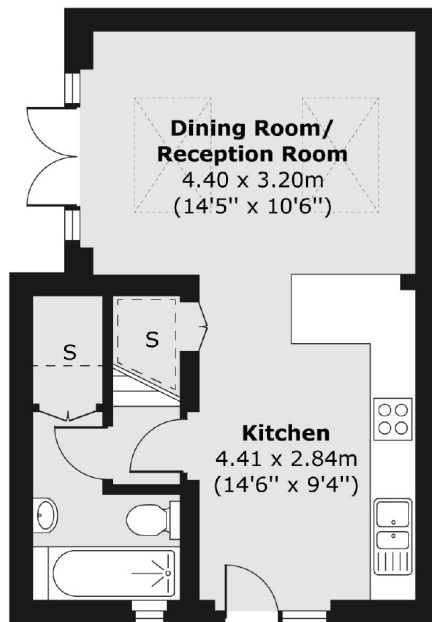
Abbeville Road is a tree lined street moments from the many local shops, restaurants and cafés of Abbeville Village, with Clapham South & Common stations, along with the common itself just a short stroll away.

Features

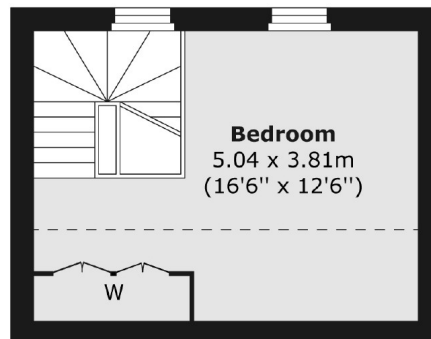
Split Level
Fully Refurbished
Open Plan Kitchen
Bedroom
Bathroom
Good Location

Abbeville Road, London, SW4

Ground Floor



First Floor



Total area (approx.) 54.52 sq. m (587 sq. ft)

Contact

To arrange a viewing call our office on the number below or visit our website.



Energy Rating: C. We aim to make our particulars both accurate and reliable. However they are not guaranteed; nor do they form part of an offer or contract. If you require clarification on any points then please contact us, especially if you're traveling some distance to view. Please note that appliances and heating systems have not been tested and therefore no warranties can be given as to their good working order.