



Albemarle Walk, SW9

£550,000

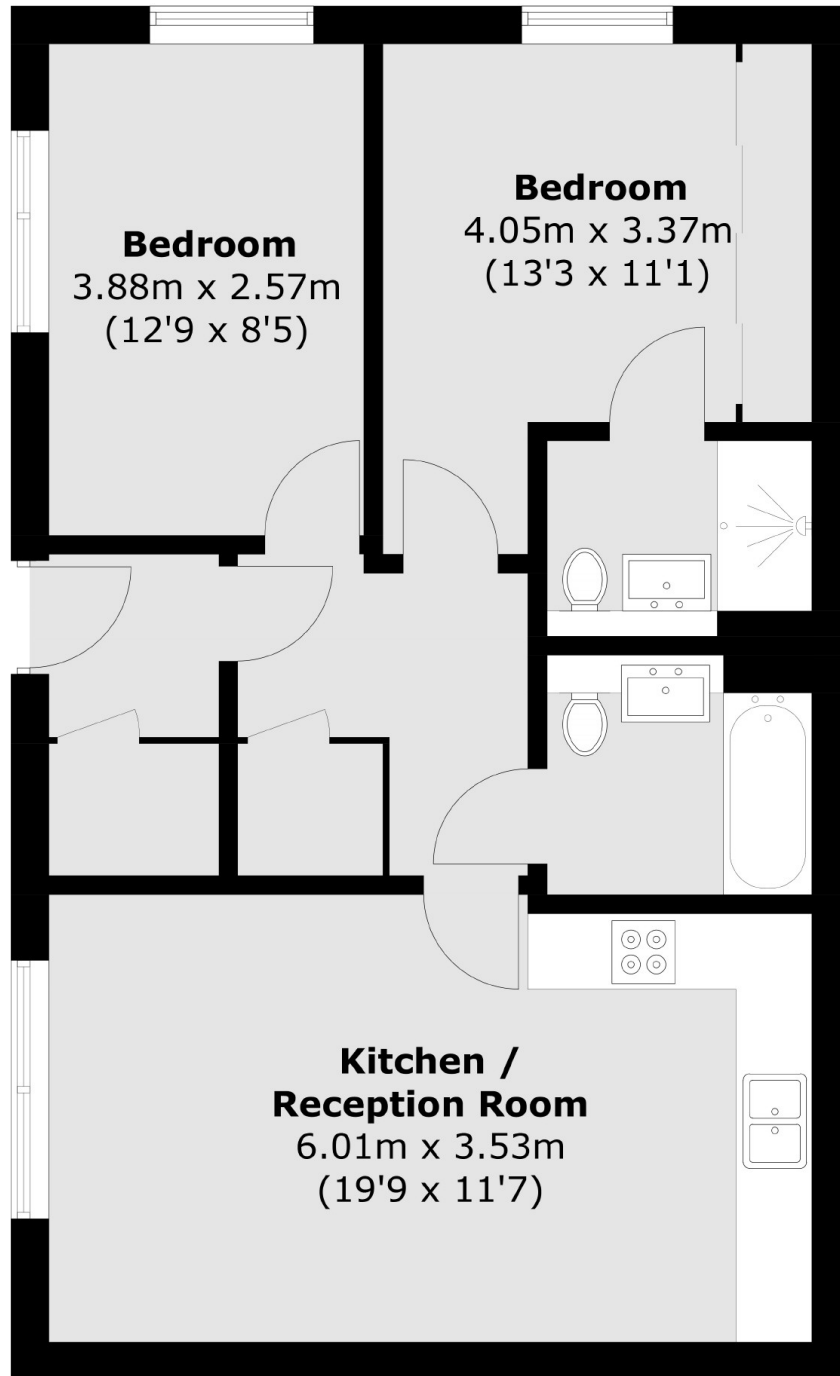
A contemporary ground-floor apartment situated within a desirable modern development with a private entrance and wrap-around garden. Comprising a spacious open plan reception room with a well-equipped kitchen which provides ample room to both relax and entertain guests, two well-proportioned double bedrooms and two bathrooms.

Albemarle Walk is enviably located moments from the vibrant Brixton Town Centre, an area renowned for its many restaurants, bars and shops. Brixton Underground (Victoria Line), Main Line services and Stockwell (Northern Line) are close by.

Features

- Ground Floor Apartment
- Open Plan Reception
- Two Bedrooms
- Two Bathrooms
- Long Lease
- Chain Free

Albemarle Walk,
London, SW9



Total area (approx.): 62.4 sq. m (671.7 sq. ft)