

Edithna Street, SW9

£895,000

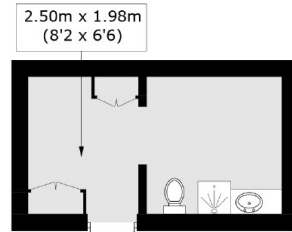
A four bedroom end of terrace family home with two bathrooms and a self contained converted garage located on the edges of the popular "Clapham North Triangle".

Edithna Street is well located for easy access to both Clapham High Street & Brixton. As such you have no shortage of great bars & restaurants nearby as well as both the Northern & Victoria Lines making commuting into town pretty easy.

Features

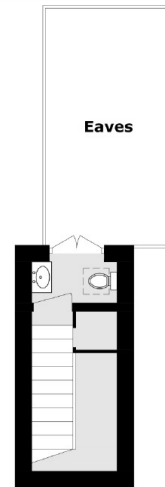
- Flexible Layout
- Spacious Eat in Kitchen
- Four Double Bedrooms
- Converted Garage
- Side Access
- No Chain

Edithna Street, London, SW9



Outbuilding

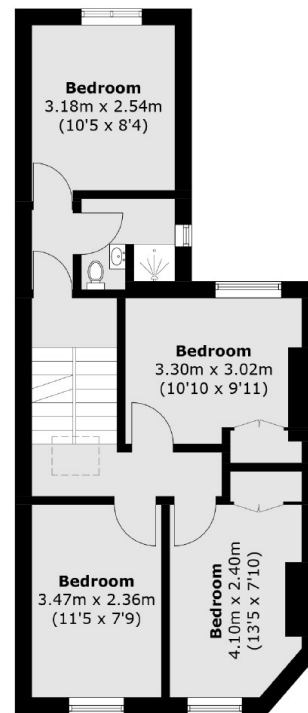
(Not Shown In Actual Location / Orientation)



Second Floor



Ground Floor



First Floor

Total area (approx.): 125.8 sq. m (1,354.1 sq. ft)
Outbuilding : 11.6 sq. m (124.9 sq. ft)
(Excluding Eaves)