



## Ferndale Road, SW4

£450,000

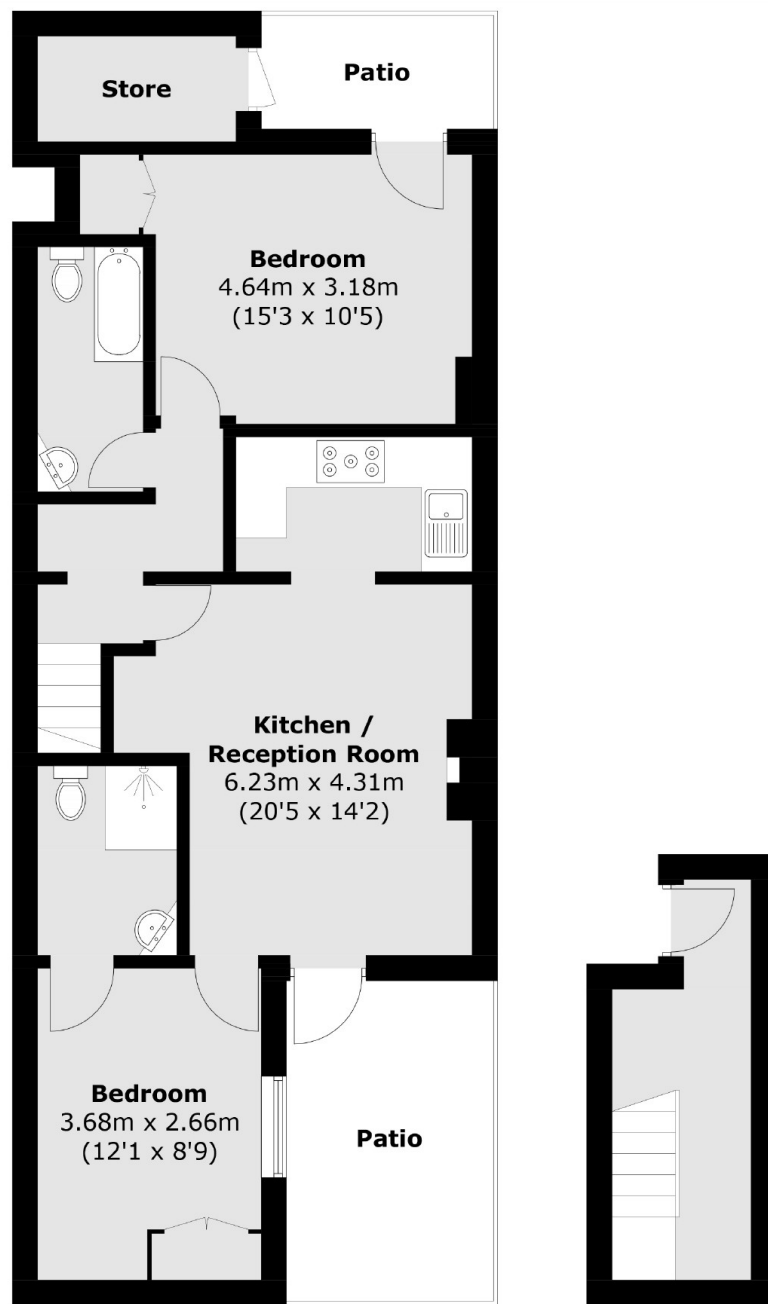
A superb period conversion presented in excellent order throughout with well-balanced accommodation extending to a generous 723 sq.ft, comprising a spacious reception room with ample room to dine, an adjoining integrated kitchen two double bedrooms, two bathrooms and a patio garden.

Ferndale Road is located a short walk from the many shops, restaurants and bars of Clapham High Street and central Brixton along with Clapham North Underground (Northern Line), Overground & Brixton Underground (Victoria Line) stations.

### Features

- Two Double Bedrooms
- Period Conversion
- Reception Room
- Share Of Freehold
- Patio Garden
- Close To Transport Links

# Ferndale Road, London, SW4



**Lower Ground Floor**

**Ground Floor**

Total area (approx.): 65.7 sq. m (707.2 sq. ft)  
Store: 3.0 sq. m (32.3 sq. ft)  
Patio: 13.0 sq. m (139.9 sq. ft)