



## Sudbourne Road, SW2

£1,400,000

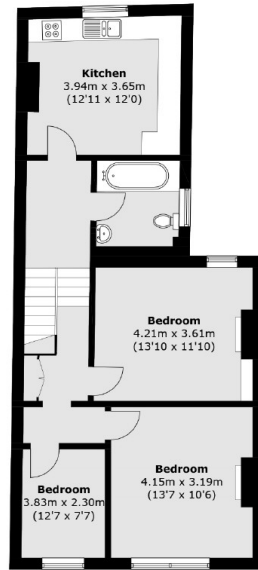
Representing a rare and exciting opportunity, this seven-bedroom freehold home extends to a phenomenal 2,566 sq.ft naturally over three floors, whilst retaining the potential to extend and a south-facing garden.

Sudbourne Road is perfectly situated between Clapham & Brixton providing great access to the areas many local amenities. Clapham North (Northern Line) & Brixton station (Victoria Line) are also close by.

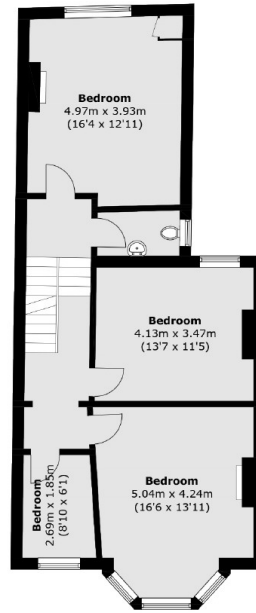
### Features

- Freehold
- Two Reception Rooms
- Seven Bedrooms
- Two Bathrooms
- South Facing Garden
- Potential To Extend

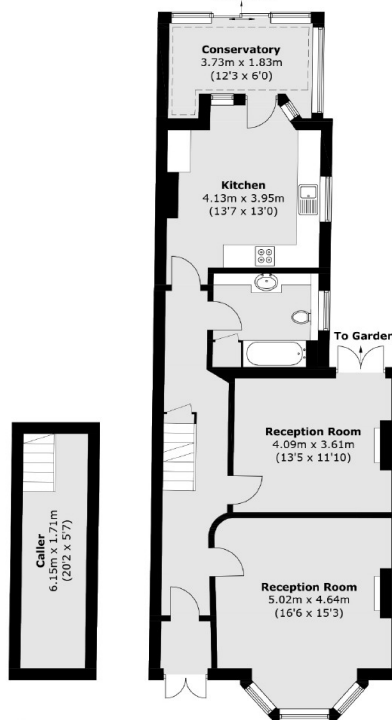
# Sudbourne Road, London, SW2



**Second Floor**



**First Floor**



**Lower  
Ground Floor**

**Ground Floor**

Total area (approx.): 241.2 sq. m (2596.2 sq. ft)  
(Including Cellar)