



Beira Street, SW12

£725,000

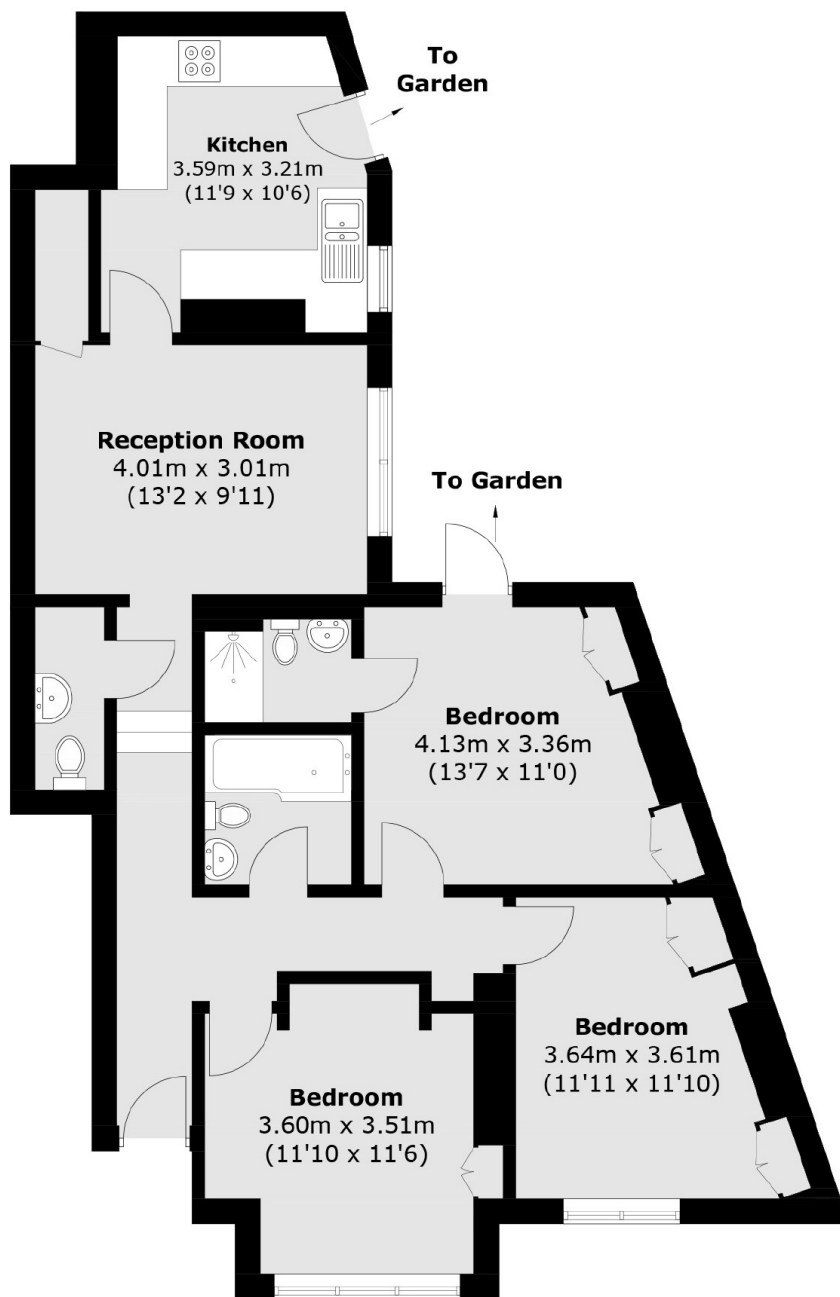
A superbly presented ground-floor maisonette offering spacious, versatile accommodation in excellent condition throughout. This bright and airy home can be flexibly arranged as either a two or three-bedroom apartment, with the option of one or two reception rooms to suit your lifestyle. The property features a well-equipped kitchen, two bathrooms, and an additional cloakroom. Further benefits include private outdoor space, a share of the freehold, and no onward chain, making this an ideal choice for a hassle-free move.

Beira Street is ideally located in central Balham, providing excellent access to the area's many shops, bars and restaurants, Clapham South and Balham stations (Overground & Underground) are close by, as well as the wide open spaces of Clapham & Tooting Bec Commons.

Features

- Ground Floor Maisonette
- Two/Three Bedrooms
- Two Bathrooms
- Share Of Freehold
- Private Outside Space
- Chain Free

Beira Street, London, SW12



Ground Floor

Total area (approx.): 80.9 sq. m (870.8 sq. ft)

Dexters

Clapham Sales
28 Abbeville Road
London
SW4 9NG
Sales
020 8742 4140

Energy Rating: D. We aim to make our particulars both accurate and reliable. However they are not guaranteed; nor do they form part of an offer or contract. If you require clarification on any points then please contact us, especially if you're traveling some distance to view. Please note that appliances and heating systems have not been tested and therefore no warranties can be given as to their good working order.

 **RICS** | Regulated
Estate Agent
and Letting Agent

dexters.co.uk