



Oaklands Estate, SW4

£350,000

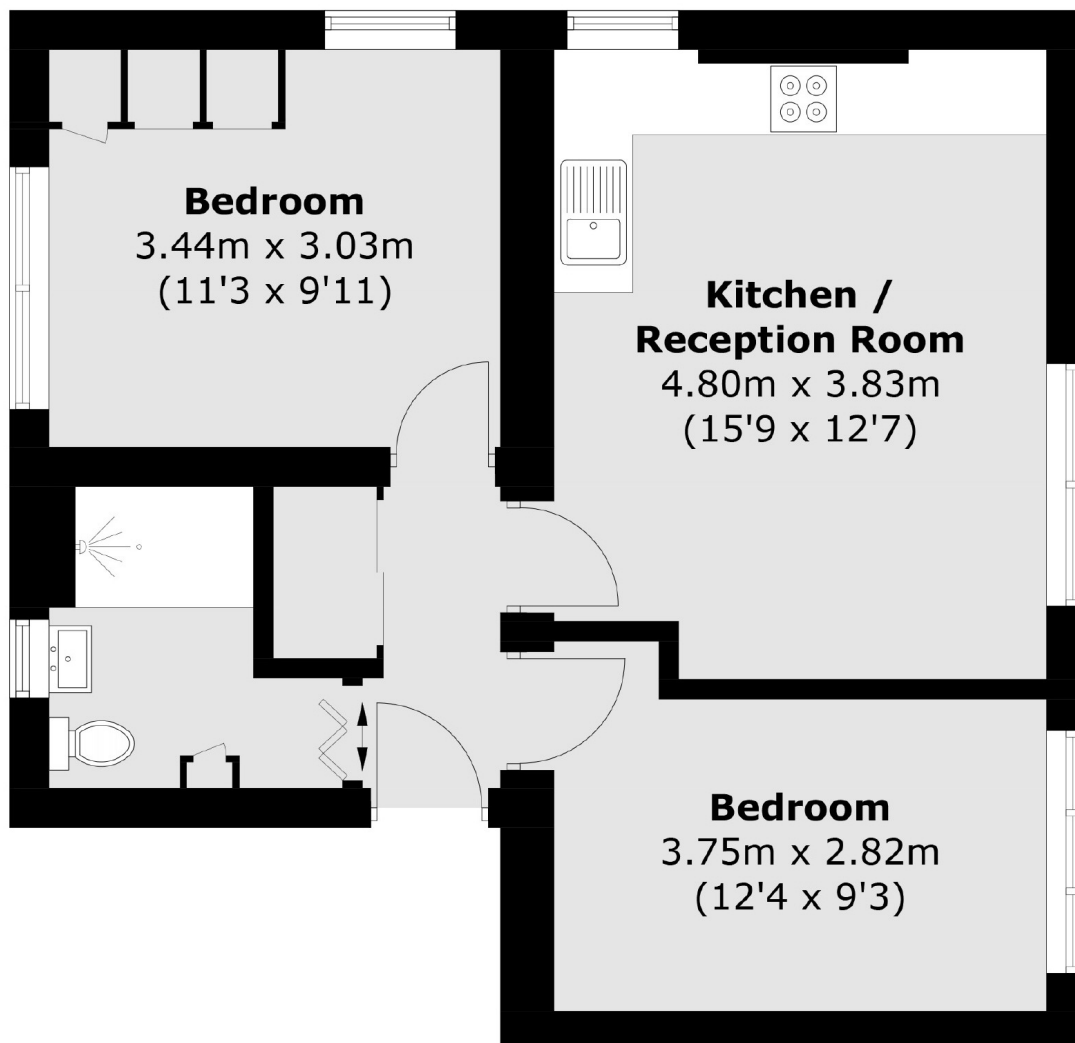
A beautifully refurbished two double bedroom top floor apartment offered in immaculate condition. The property benefits from a large open plan kitchen/reception, two double bedrooms and a modern bathroom with underfloor heating.

Hawkesworth House is located on a tree lined street on Trouville Road, positioned moments from the many local shops, restaurants and cafés of Abbeville Village. Clapham South & the wide open spaces of Clapham Common a short stroll away.

Features

- Top-Floor Apartment
- Two Double Bedrooms
- Excellent Location
- Modern Kitchen
- Communal Outside Space
- Chain Free

Oaklands Estate, London, SW4



Total area (approx.): 49.3 sq. m (530.7 sq. ft)