



Margate Road, SW2

£930,000

Dexters



Margate Road, SW2

A well-presented three/four bedroom, two bathroom mid terrace house situated on a quiet residential street. The property has been partially extended into the side return, providing a utility area and an additional bathroom, with further potential for a loft conversion (STPP). Additional benefits include a private garden, and the property is offered chain-free.

Margate Road is well located for the many local shops, restaurants and bars of the Abbeville Village. Central Clapham and central Brixton are within close proximity along with their respective Northern line & Victoria Line stations.

Features

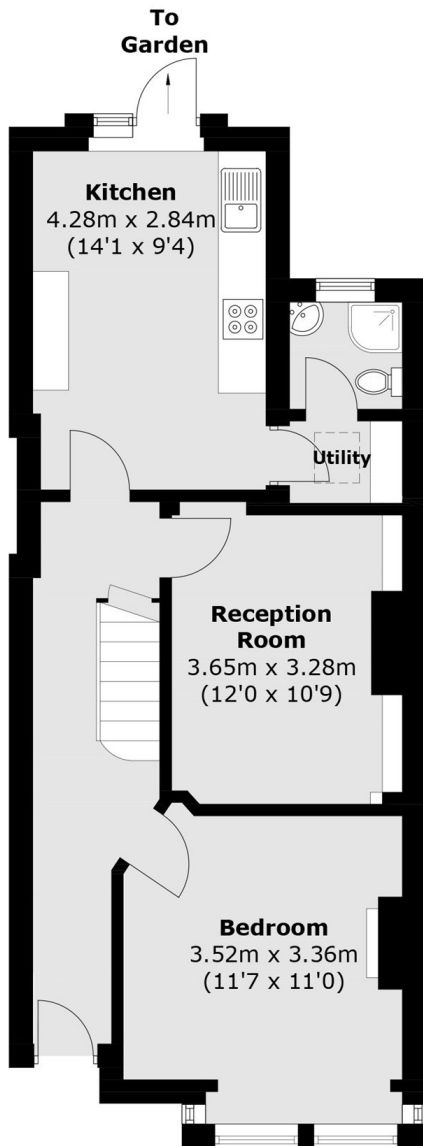
- Chain Free
- Freehold House
- Three / Four Bedroom
- Two Bathroom
- Extension Capabilities (SSTP)



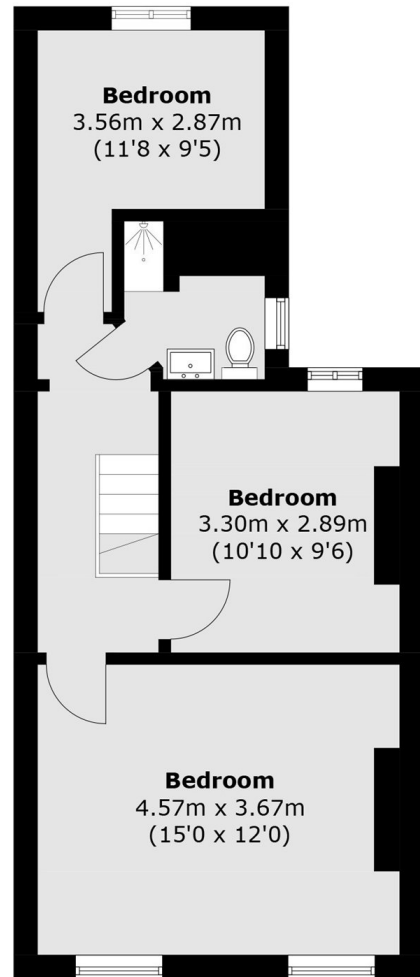




Margate Road, London, SW2



Ground Floor



First Floor

Total area (approx.): 98.1 sq. m (1,055.9 sq. ft)