



Windmill Drive, SW4

£625,000

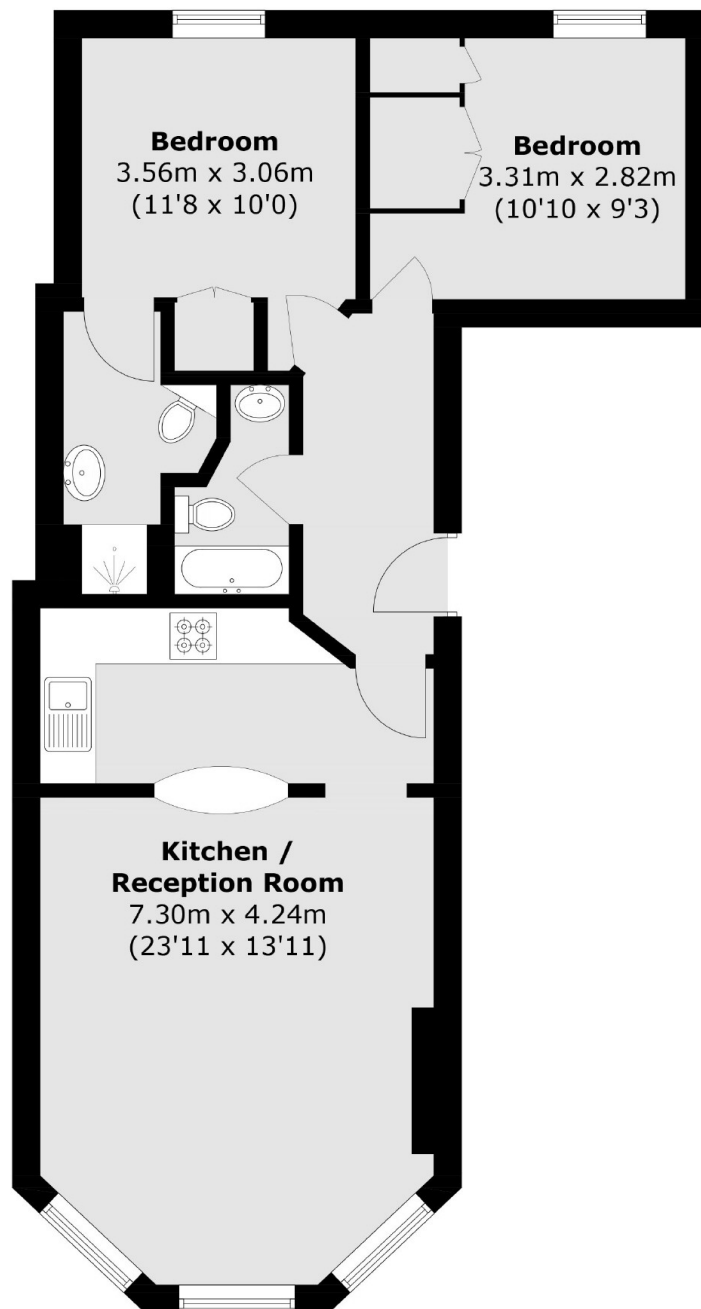
A captivating period conversion expertly balances impressive entertaining with functional living space. The bright and airy accommodation comprises a spacious reception room with a bay window overlooking the common, an adjoining open plan kitchen and island, two double bedrooms, one of which is en suite and both with fitted storage.

Windmill Drive represents a small community of highly desirable homes positioned upon Clapham Common itself. Providing easy access to the many shops, restaurants and bars of the Abbeville Village along with Clapham South & Common stations (Northern Line).

Features

- Period Conversion
- Open Plan Reception Room
- Two Double Bedrooms
- Two Bathrooms
- Long Lease
- Fantastic Location

Windmill Drive, London, SW4



Total area (approx.): 64.8 sq.m (697 sq. ft)

Dexters

Clapham Sales
28 Abbeville Road
London
SW4 9NG
Sales
020 8742 4140

Energy Rating: C. We aim to make our particulars both accurate and reliable. However they are not guaranteed; nor do they form part of an offer or contract. If you require clarification on any points then please contact us, especially if you're traveling some distance to view. Please note that appliances and heating systems have not been tested and therefore no warranties can be given as to their good working order.

 **RICS** | Regulated
Estate Agent
and Letting Agent

[dexters.co.uk](https://www.dexters.co.uk)