



Abbeyville Road, SW4

£1,850,000

Dexters



Abbeville Road, SW4

This superb Victorian terraced home has been fully extended and meticulously refurbished to an exceptionally high standard to create a property both impressive and functional in equal measure.

The accommodation is arranged over three floors and spans a much larger than average 2317 sq.ft. Comprising a cleverly designed ground floor including a double reception room with two fireplaces and a log burning stove, parquet flooring and bespoke cabinetry with fitted bookcases. The kitchen can be accessed via both the hallway and reception room and spans an impressive 32 ft, featuring a range of integrated appliances, a large island, ample room to dine and a comfortable family area, recessed into the floor is an eye catching spiral wine cellar, French doors open on to a 43ft garden.

Over the first and second floors are five double bedrooms, each with fitted storage and three bathrooms; the principal bedroom is situated in its traditional position on the first floor.

Abbeville Road is a tree lined street moments from the many local shops, restaurants and cafés of Abbeville Village, with Clapham South & Common stations, along with the common itself just a short stroll away.

Features

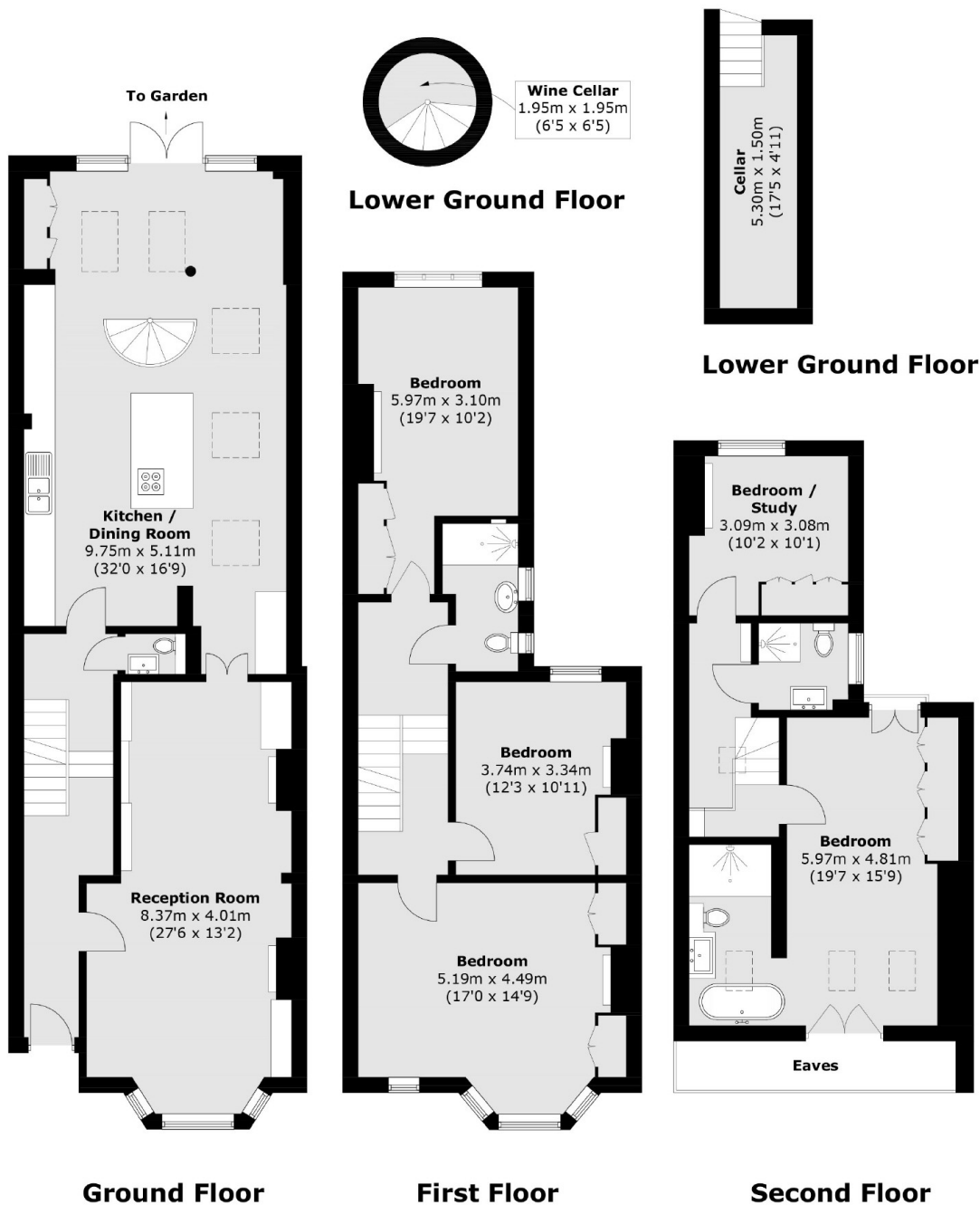
- Freehold Home
- Two Reception Rooms
- Extended Kitchen
- Five Bedrooms
- Three Bathrooms
- Large Garden







Abbeville Road, London, SW4



Total area (approx.): 213.7 sq. m (2,300.3 sq. ft)
(Excluding Eaves)

Dexters

Clapham Sales
28 Abbeville Road
London
SW4 9NG
Sales
020 8742 4140

Energy Rating: D. We aim to make our particulars both accurate and reliable. However they are not guaranteed; nor do they form part of an offer or contract. If you require clarification on any points then please contact us, especially if you're traveling some distance to view. Please note that appliances and heating systems have not been tested and therefore no warranties can be given as to their good working order.

RICS Regulated
Estate Agent
and Letting Agent

dexters.co.uk