



Kings Avenue, SW4

£525,000

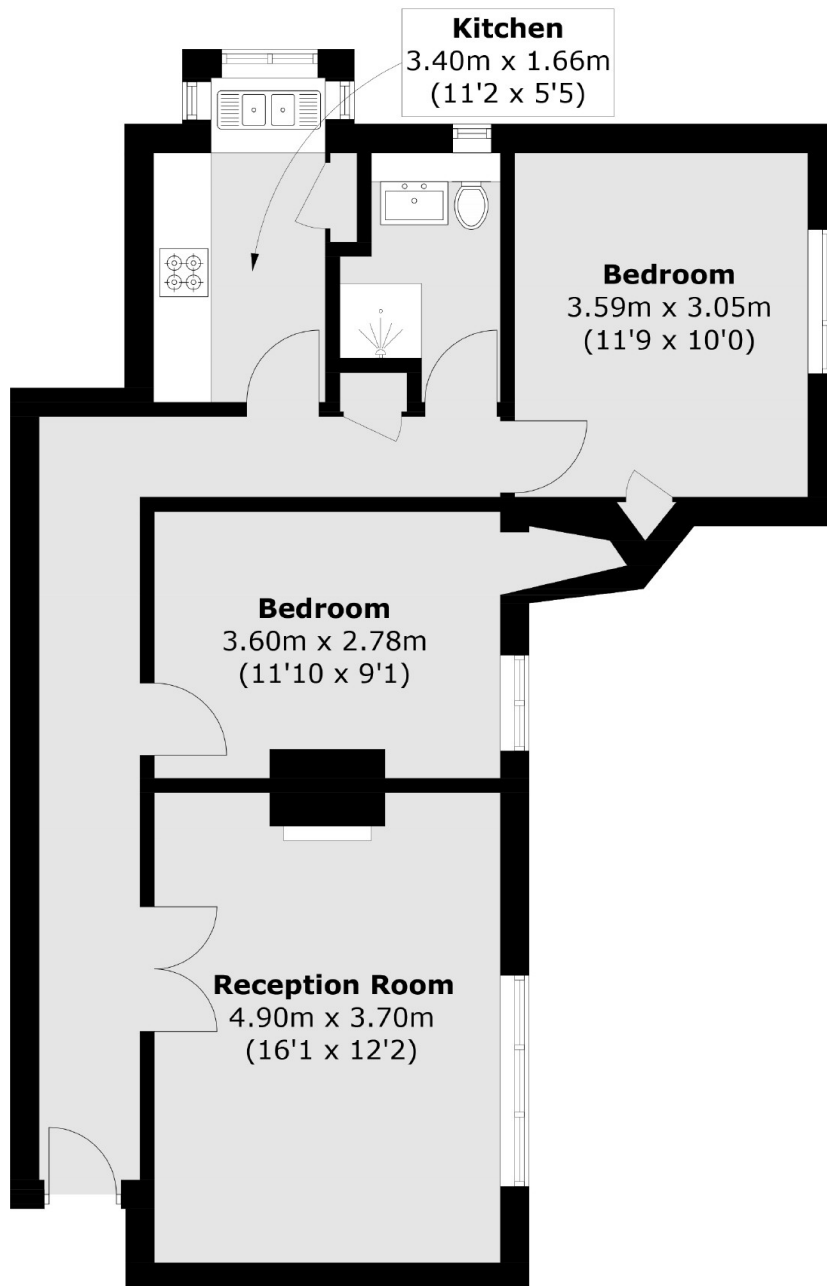
An attractive second-floor lateral apartment situated within an impressive, private Georgian Mansion with a vast communal garden and communal off-street parking. Comprising a spacious reception room which overlooks the garden, a separate well-equipped kitchen, two double bedrooms and a bathroom. Offered to the market chain free and which a share of freehold.

Oakfield Court is situated on the Kings Avenue within easy reach of Abbeville Villages many local restaurants, shops and bars. Clapham Common and Clapham High Street with their respective stations are also within walking distance.

Features

- Lateral Apartment
- Two Double Bedrooms
- Communal Garden
- Off-Street Parking
- Chain Free
- Share Of Freehold

Kings Avenue, London, SW4



Total area (approx.): 65.1 sq. m (700.7 sq. ft)

Dexters

Clapham Sales
28 Abbeville Road
London
SW4 9NG
Sales
020 8742 4140

Energy Rating: C. We aim to make our particulars both accurate and reliable. However they are not guaranteed; nor do they form part of an offer or contract. If you require clarification on any points then please contact us, especially if you're traveling some distance to view. Please note that appliances and heating systems have not been tested and therefore no warranties can be given as to their good working order.

 **RICS** | Regulated
Estate Agent
and Letting Agent

[dexters.co.uk](https://www.dexters.co.uk)