



Strathleven Road, SW2

£850,000

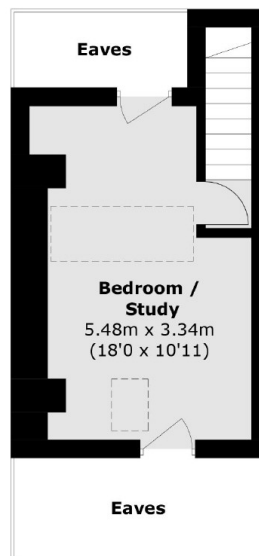
This charming freehold house has been finished to a high and tasteful standard throughout, providing balanced living and entertaining space over three floors with a low-maintenance garden. Comprising a forward-facing reception room with a bay window and an original fireplace, a bright dining room with an adjoining, well-equipped kitchen, three bedrooms and a newly fitted family bathroom. The property further benefits from solid oak floors across the ground floor and oak balusters and bannisters across each level.

Strathleven Road is a quiet residential street popular for its close proximity to the many superb shops, restaurants and bars of both Brixton and Clapham town centres. The green open spaces of Brockwell Park are close by, along with excellent transport links including the Victoria & Northern Lines.

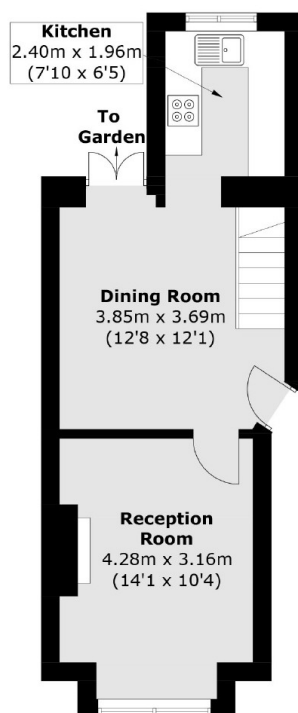
Features

- Freehold Home
- Reception Room
- Dining Room
- Modern Kitchen
- Three Bedrooms
- Garden

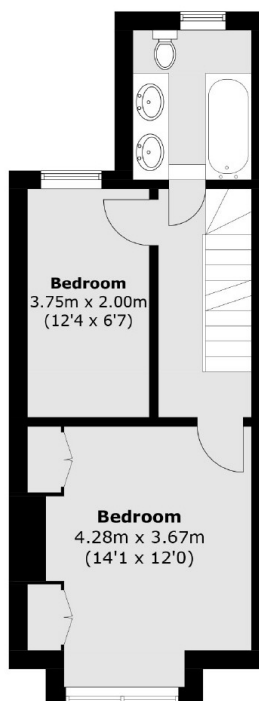
Strathleven Road, London, SW2



Second Floor



Ground Floor



First Floor

Total area (approx.): 86.7 sq. m (933.1 sq. ft)
(Excluding Eaves)