



## Kings Avenue, SW4

### £1,000,000

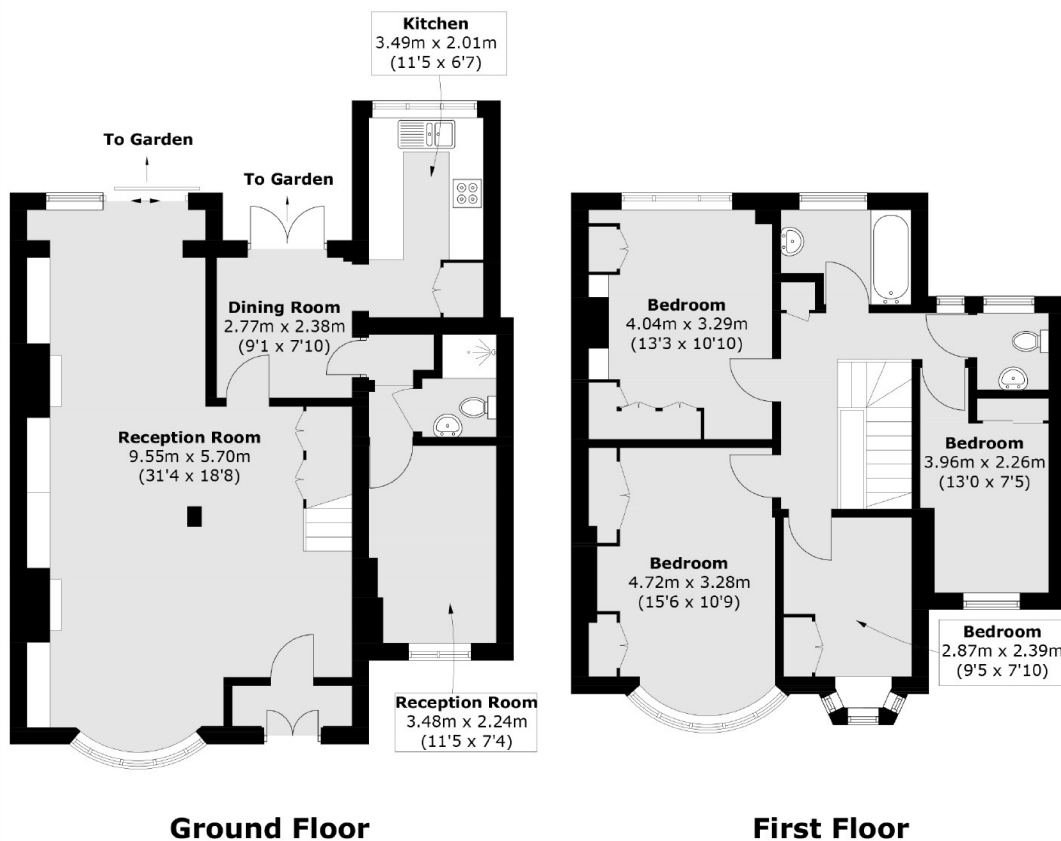
A substantial and superbly presented semi-detached freehold home with off-street parking for two cars and an expansive garden over 60ft in length. The accommodation naturally extends over two floors to an impressive 1,429 sq.ft and has been thoughtfully arranged to create balanced living and entertaining space which is both practical and impressive in equal measure, whilst retaining the potential for substantial extension (STPP). The ground floor comprises a vast 31 ft reception room with generous room to entertain, a separate kitchen, a shower room and a versatile space which could be used as, for example, an office or gym. Over the upper floor, there are four bedrooms, a bathroom and a cloakroom.

The property is located on Kings Avenue, a popular residential street nestled between Abbeville Road, Clapham North and Acre Lane, so ideal for access to great bars, restaurants and transport links.

### Features

- Freehold Home
- Reception Room
- Kitchen/Breakfast Room
- Four Bedrooms
- Two Bathrooms
- Off Street Parking

# Kings Avenue, London, SW4



Total area (approx.): 132.8 sq. m (1429.4 sq. ft)

## Dexters

Clapham Sales  
28 Abbeville Road  
London  
SW4 9NG  
Sales  
020 8742 4140

Energy Rating: D. We aim to make our particulars both accurate and reliable. However they are not guaranteed; nor do they form part of an offer or contract. If you require clarification on any points then please contact us, especially if you're traveling some distance to view. Please note that appliances and heating systems have not been tested and therefore no warranties can be given as to their good working order.

**RICS** Regulated  
Estate Agent  
and Letting Agent

[dexters.co.uk](https://www.dexters.co.uk)