



Trouville Road, SW4

£875,000

This rarely available ground floor, period maisonette provides an impressive 1,045 sq.ft of immaculately presented, bright and airy, living and entertaining space. Comprising a large forward-facing reception room with a feature fireplace, alcove cabinetry and plantation shutters; a separate kitchen/breakfast room with a range of integrated appliances and attractive wall and base units. The principal bedroom has built-in wardrobes and en suite facilities, two further double bedrooms and a bathroom complete the accommodation. Outside there is a private garden. The property is offered to the market chain free.

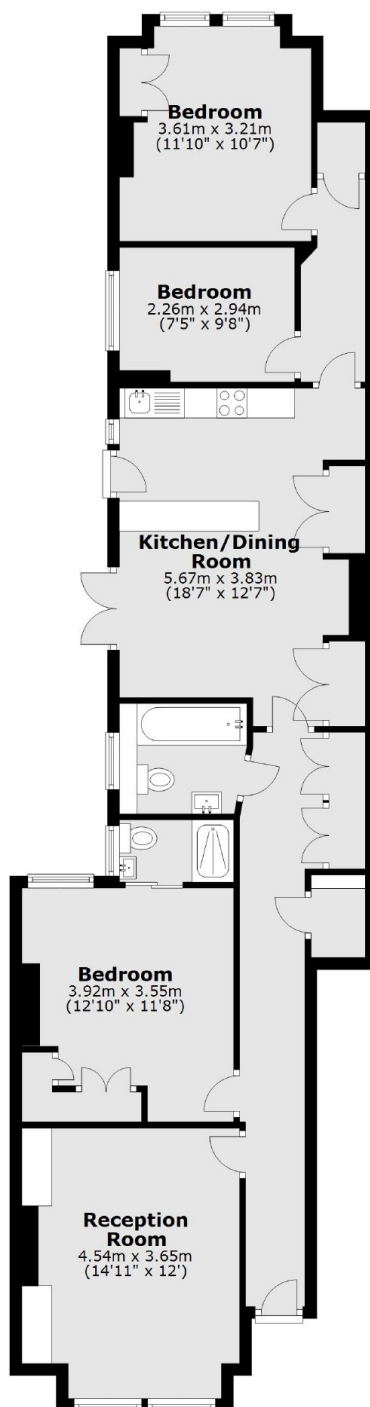
Trouville Road is a tree-lined residential street located in the Abbeville Village, an area renowned for its local restaurants, boutique shops and bars. Clapham Common and Clapham South station (Northern Line) are a short walk away.

Features

- Ground Floor Maisonette
- Kitchen/Dining Room
- Three Bedrooms
- Two Bathrooms
- Private Garden
- Chain Free

Trouville Road, London, SW4

Ground Floor



Total area: approx. 97.2 sq. metres (1046.1 sq. feet)

Dexters

Clapham Sales
28 Abbeville Road
London
SW4 9NG
Sales
020 8742 4140

Energy Rating: C. We aim to make our particulars both accurate and reliable. However they are not guaranteed; nor do they form part of an offer or contract. If you require clarification on any points then please contact us, especially if you're traveling some distance to view. Please note that appliances and heating systems have not been tested and therefore no warranties can be given as to their good working order.

 **RICS** | Regulated
Estate Agent
and Letting Agent

[dexters.co.uk](https://www.dexters.co.uk)