



Welmar Mews, SW4

£725,000

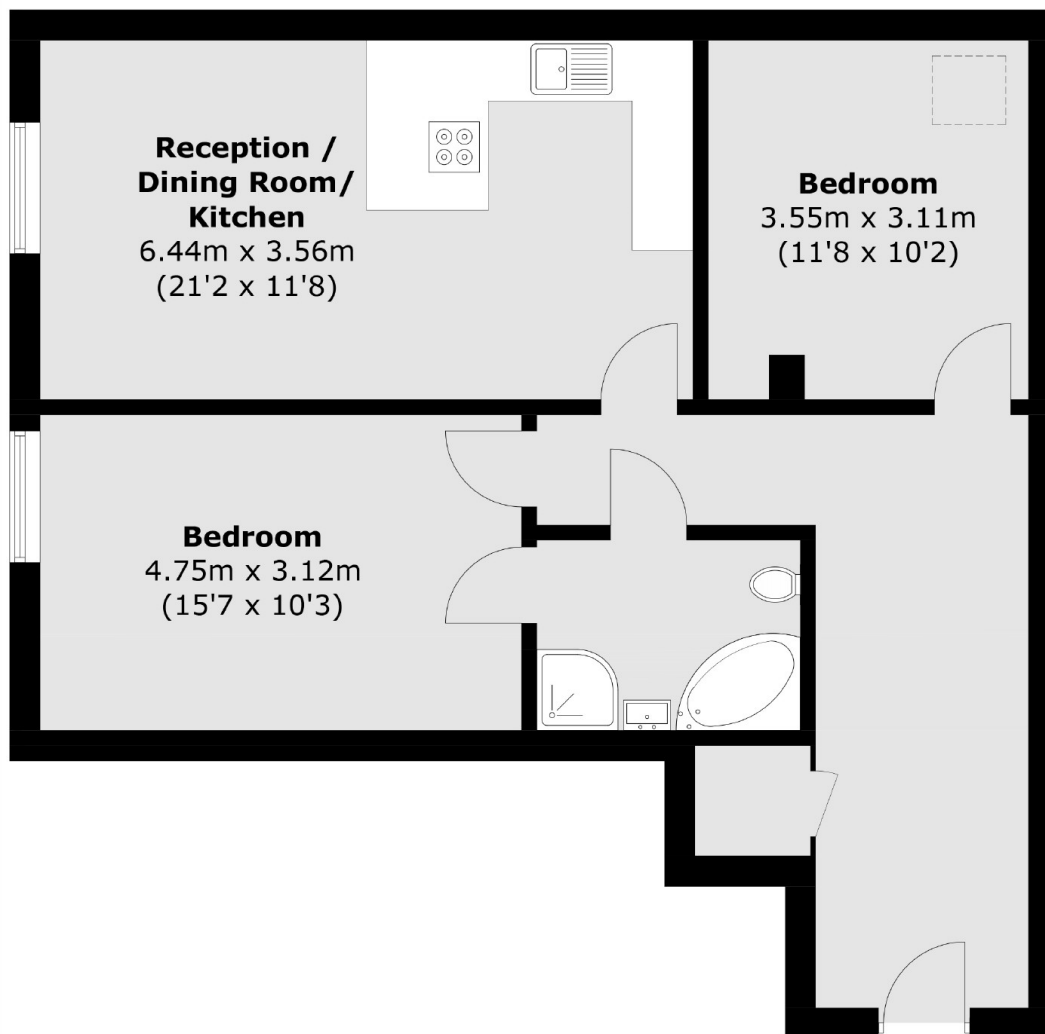
A first-floor lateral apartment situated within a sought-after, private gated mews in the heart of Clapham. The naturally bright and airy accommodation has high ceilings throughout and expertly balances impressive entertaining with functional living space, comprising a large open plan reception room with ample room for both relaxing and dining, coupled with a modern kitchen featuring a range of attractive wall and base units along with integrated appliance; two well proportioned double bedrooms and a contemporary, family bathroom.

Welmar Mews is located moments from the renowned Abbeville Village and Clapham Old Town, both known for their excellent shops, bars, and restaurants, along with the common itself. Ideally positioned Between Clapham Common (Northern Line), Clapham High Street (Overground), and Brixton (Victoria Line) stations, ensuring convenient transport links.

Features

- Private Gated Mews
- Open Plan Reception Room
- Modern Kitchen
- Two Double Bedrooms
- Family Bathroom
- Long Lease

Welmar Mews, London, SW4



Total area (approx.): 73.8 sq. m (794.4 sq. ft)