



Crescent Lane, SW4
£950,000

Dexters



Crescent Lane, SW4

This truly impressive, ground-floor period conversion is a testament to sophisticated living and meticulous design, providing an abundance of bright and airy living and entertaining space with a private garden.

Arranged to include a semi open-plan reception room with a comfortable seating area, fitted shelving and desk, an adjoining contemporary kitchen featuring a range of integrated appliances, a central island and ample room for a large dining table. The two spaces can be separated by partition pocket doors and also include a utility cupboard and toilet. Large-format sliding doors frame a private, low-maintenance garden. Moving towards the front of the property, there are two spacious double bedrooms, both with bespoke fitted wardrobes and intricate ceiling plasterwork, and a family bathroom. Offered to the market with a share of freehold.

Crescent Lane is situated within the Abbeville Village, a highly desirable area renowned for many boutique shops, restaurants and cafés. Clapham Common along with its respective station (Northern Line), are just a short stroll away.

Features

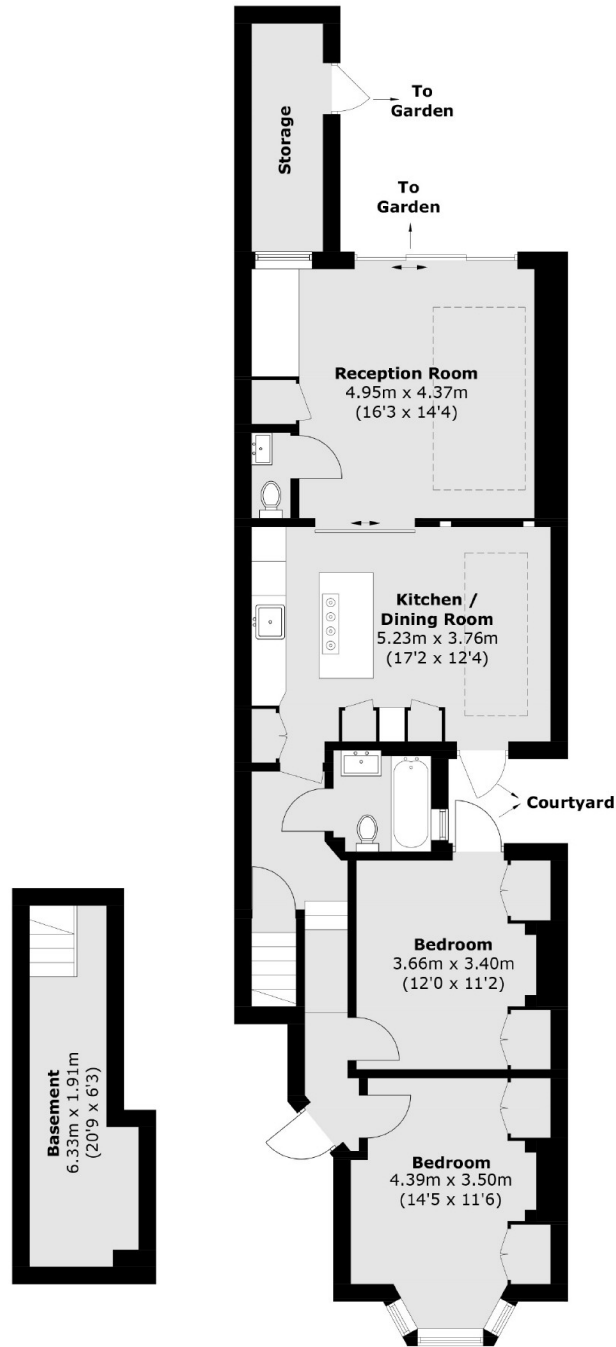
- Open Plan Reception Room
- Modern Kitchen
- Two Double Bedrooms
- Family Bathroom
- Second Toilet
- Private Garden







Crescent Lane, London, SW4



Lower Ground Floor

Ground Floor

**Total area (approx): 101.1 sq. m (1,088.2 sq. ft)
(Including Basement)**

Storage: 5.1 sq. m (54.9 sq. ft)

Dexters

Clapham Sales
28 Abbeville Road
London
SW4 9NG
Sales
020 8742 4140

Energy Rating: C. We aim to make our particulars both accurate and reliable. However they are not guaranteed; nor do they form part of an offer or contract. If you require clarification on any points then please contact us, especially if you're traveling some distance to view. Please note that appliances and heating systems have not been tested and therefore no warranties can be given as to their good working order.

RICS Regulated
Estate Agent
and Letting Agent

dexters.co.uk