



Branksome Road, SW2

£300,000

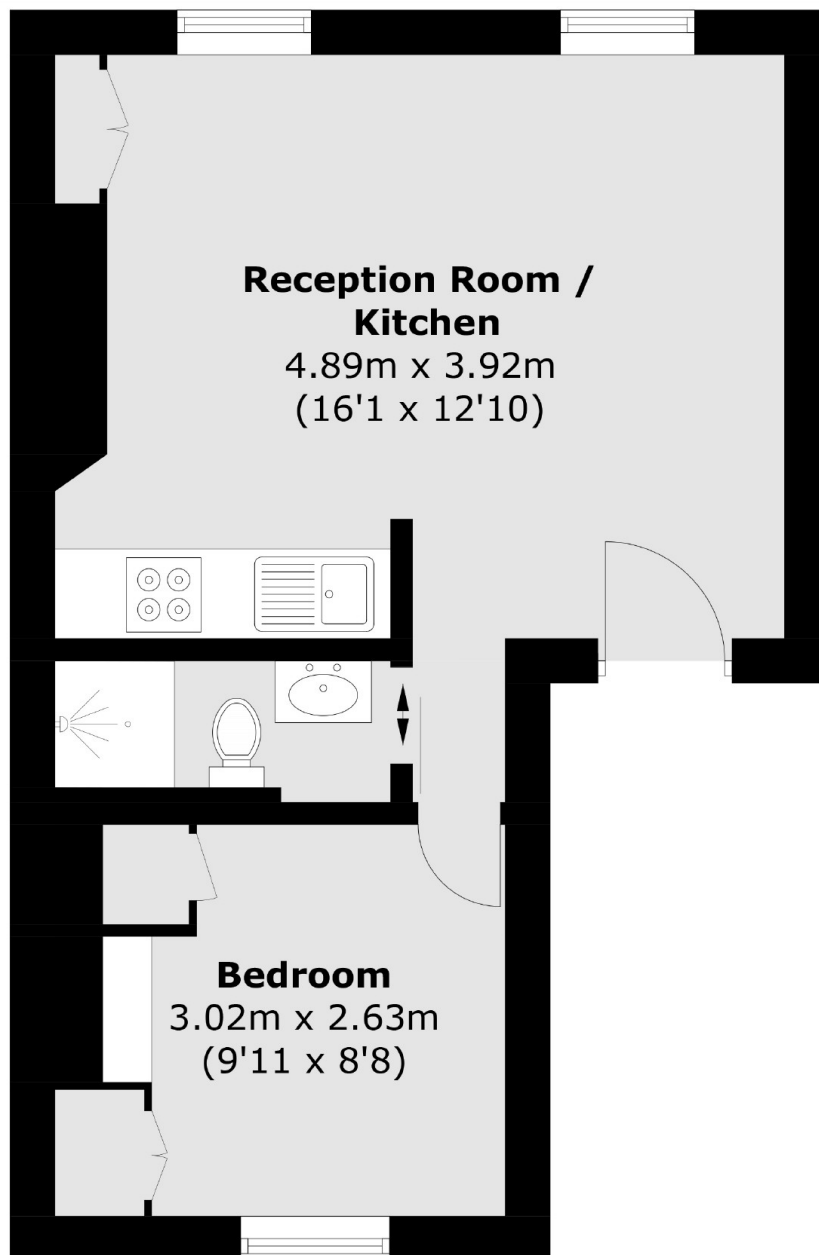
A first floor period conversion presented in superb condition throughout, ideal for those looking for a contemporary turn-key purchase. Comprising an open plan reception room with a modern kitchen, ample room to dine and bespoke cabinetry, a double bedroom with fitted wardrobes and a shower room. Offered to the market chain free and with a long lease.

Branksome Road is a quiet residential street popular for its close proximity to the many superb shops, restaurants and bars of both Brixton and Clapham town centres. The green open spaces of Brockwell Park are close by, along with excellent transport links including the Victoria & Northern Lines.

Features

- Period Conversion
- Open Plan Reception Room
- Double Bedroom
- Long Lease
- Chain Free
- Fantastic Location

Branksome Road,
London, SW2



Total area (approx.): 31.0 sq. m (333.7 sq. ft)

Dexters

Clapham Sales
28 Abbeville Road
London
SW4 9NG
Sales
020 8742 4140

Energy Rating: C. We aim to make our particulars both accurate and reliable. However they are not guaranteed; nor do they form part of an offer or contract. If you require clarification on any points then please contact us, especially if you're traveling some distance to view. Please note that appliances and heating systems have not been tested and therefore no warranties can be given as to their good working order.

 **RICS** | Regulated
Estate Agent
and Letting Agent

[dexters.co.uk](https://www.dexters.co.uk)