



Mandeville Mews, SW4
£1,000,000

Dexters



Mandeville Mews, SW4

A rarely available freehold home situated within a sought-after, private gated mews with off-street parking and a south-facing garden. Having been extensively refurbished to a high and tasteful standard throughout, this naturally bright and airy property expertly balances impressive entertaining with functional living space.

Comprising a large reception room with space for multiple seating areas and ample room for dining, a separate well-equipped kitchen/breakfast room, three bedrooms, two bathrooms and a further cloakroom.

Mandeville Mews is tucked just behind the popular Abbeville Village, an area renowned for array of shops, bars and restaurants, Clapham Old Town along with two Northern Line Stations and the wide opens spaces of Clapham Common are close by.

Features

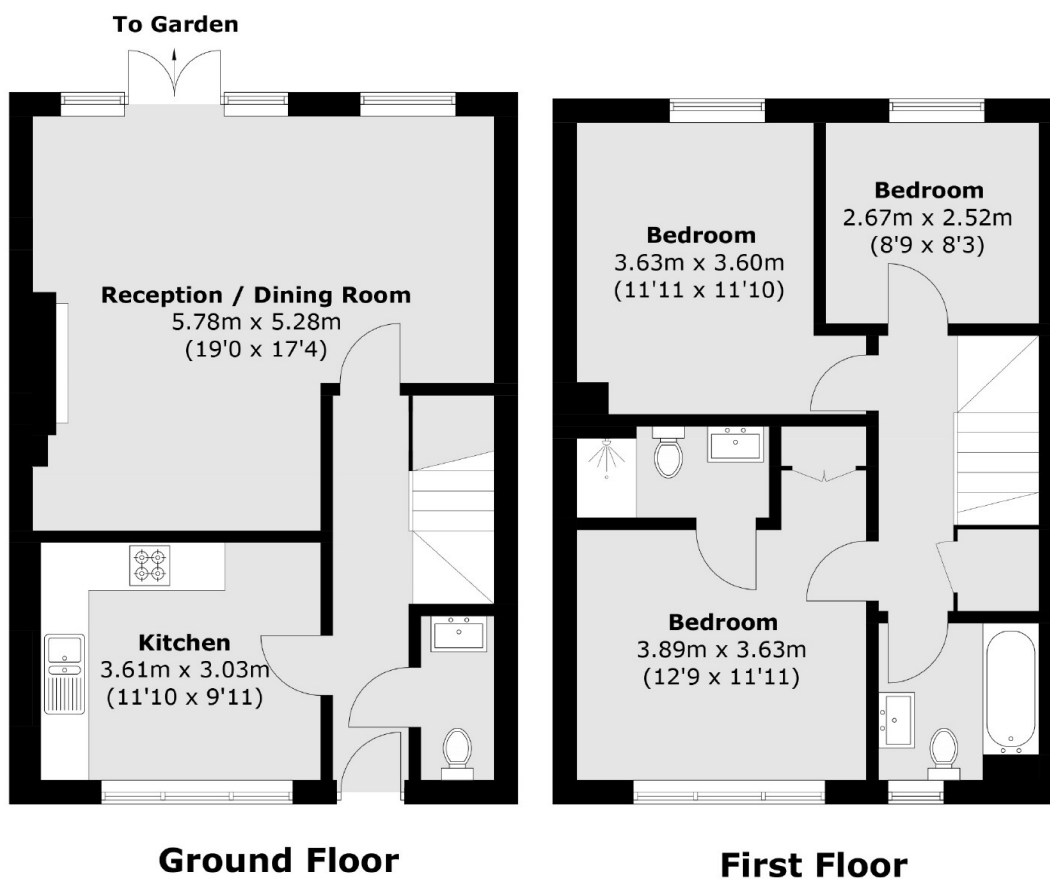
- Private Gated Development
- Freehold Home
- Large Reception Room
- Kitchen/Breakfast Room
- Three Double Bedrooms
- Family Bathroom & En Suite







Mandeville Mews, London, SW4



Total area (approx.): 96.3 sq. m (1,036.5 sq. ft)