

## Park Hill, SW4

### £299,950

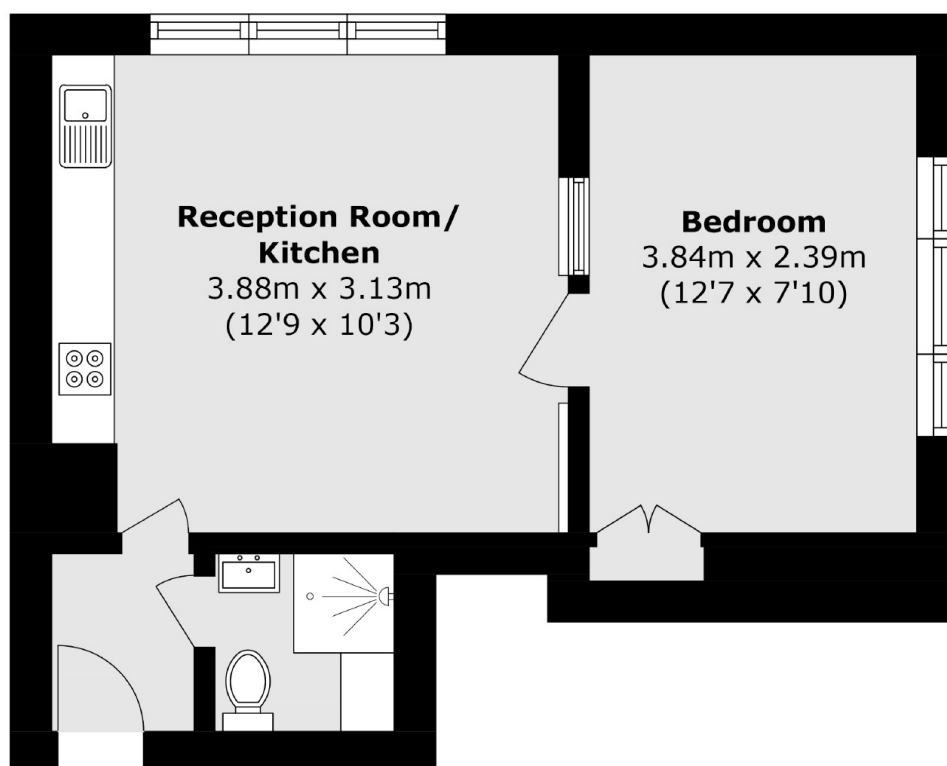
This unique raised ground floor period conversion is set within an imposing semi-detached building in central Clapham, comprising an open plan reception room with a well-equipped kitchen, a double bedroom, and a bathroom. The property is offered to the market chain free, with a share of freehold and off-street parking on a first come, first served basis.

Park Hill is situated within the Abbeville Village, a highly desirable area renowned for its many boutique shops, bars and restaurants. Clapham Common along with its respective station (Northern Line), are just a short stroll away.

### Features

- Period Conversion
- Open Plan Kitchen
- Double Bedroom
- Share Of Freehold
- Chain Free
- Off-Street Parking

# Park Hill, London, SW4



Total area (approx.): 26.4 sq. m (284.1 sq. ft)