



**Bonneville Gardens, SW4**  
**£835,000**

**Dexters**



## Bonneville Gardens, SW4

This truly impressive, ground-floor mansion apartment is a testament to sophisticated living and meticulous design, providing an abundance of bright and airy living and entertaining space with a private, south facing landscaped garden.

Having undergone extensive refurbishment by the current owners over a number of years the property is finished to a high and exacting standard throughout.

To the front is an impressive reception room comprising a relaxed seating area, bay window and bespoke bookcases and cabinetry. The kitchen/breakfast room has been beautifully finished with plenty of attractive wall and base units and a range of high quality integrated appliances, completing the accommodation are three bedrooms and a contemporary bathroom.

Bonneville Gardens is a tree-lined residential road located in the Abbeville Village, an area renowned for its many local restaurants and boutique shops. Clapham Common and Clapham South station (Northern Line) are a short walk away.

### Features

- Mansion Apartment
- Immaculate Throughout
- Bright Reception Room
- Separate Kitchen
- Three Bedrooms
- Private Garden

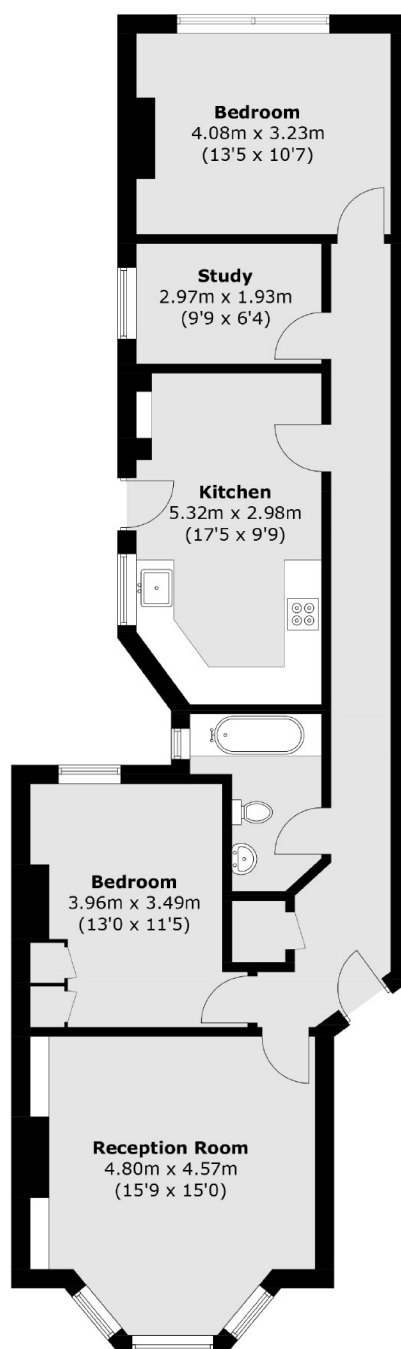








# Bonneville Gardens, London, SW4



Total area (approx.): 90.1 sq. m (969.8 sq. ft)