



Abbeville Road, SW4

£550,000

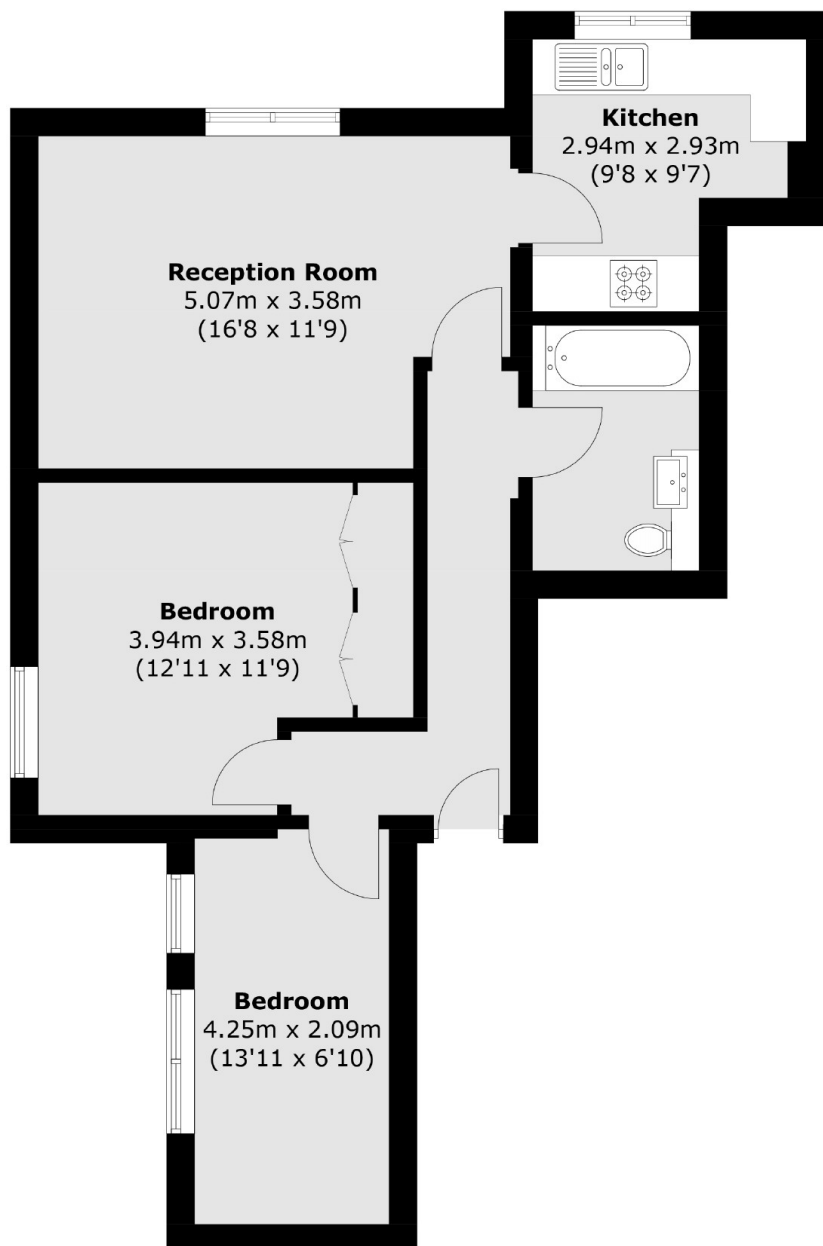
A unique example of a lateral first floor two double bedroom apartment. Part of a large Victorian Freehold conversion, this apartment is situated on the first floor. It comprises of two double bedrooms, a large separate reception room with tall ceilings, leading on to a separate kitchen.

Abbeville Road is a tree-lined street within the desirable Abbeville Village, renowned for its wide array of shops, bars and restaurants, relaxed atmosphere and proximity to Clapham Common and the Northern Line.

Features

- Period Conversion
- Share Of Freehold
- Natural Light
- Desirable Location
- Chain Free
- Two Double Bedrooms

Abbeville Road, London, SW4



Total area (approx.): 59.7 sq. m (642.6 sq. ft)

Dexters

Clapham Sales
28 Abbeville Road
London
SW4 9NG
Sales
020 8742 4140

Energy Rating: D. We aim to make our particulars both accurate and reliable. However they are not guaranteed; nor do they form part of an offer or contract. If you require clarification on any points then please contact us, especially if you're traveling some distance to view. Please note that appliances and heating systems have not been tested and therefore no warranties can be given as to their good working order.

 **RICS** | Regulated
Estate Agent
and Letting Agent

[dexters.co.uk](https://www.dexters.co.uk)