



**Lynette Avenue, SW4**  
**£999,950**

**Dexters**



## Lynette Avenue, SW4

A beautifully presented two double bedroom, two bathroom period conversion flat with private garden located in the sought after Abbeville Village.

The property occupies the ground floor of a very pretty red brick terrace which has been converted into two flats. To the front of the property is the principal suite which has built in wardrobes and period style window shutters. The second bedroom, which is also a good size double benefits from an en suite shower room. Further down the hall is the main family bathroom.

To the back of the property is a stunning open plan reception room not far off 30ft in length. There is a shaker style fully fitted kitchen with a range of appliances, marble worktops as well as a large feature island. The living area is by the sliding doors which provide access onto the patio garden.

Lynette Avenue is a lovely residential street just off Clapham Common leading towards the popular Abbeville Road, known for its strong community, local pub and independent retailers. Clapham South tube is also nearby, providing easy access into Central London.

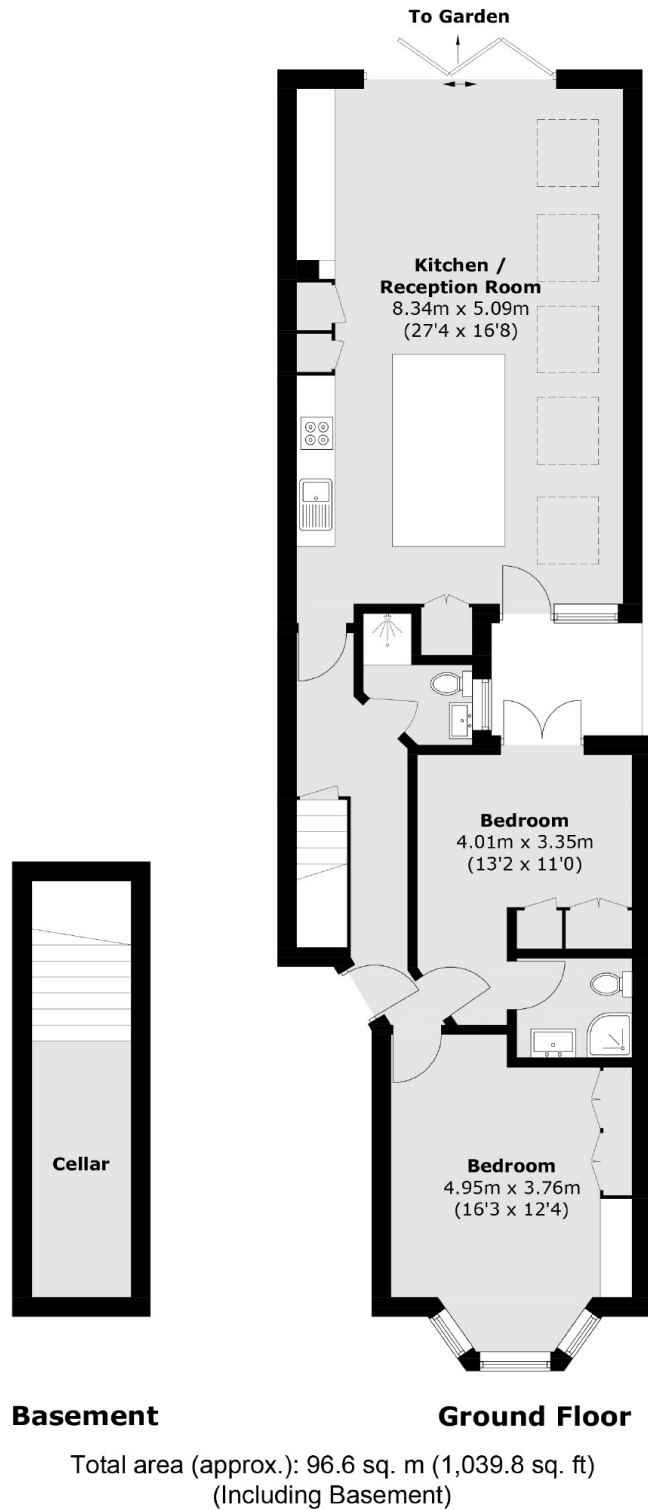
### Features

- Over 1000 sq ft
- Open Plan Reception
- Two Double Bedrooms
- Two Bathrooms
- Private Garden
- Just by Clapham Common





# Lynette Avenue, London, SW4



## Dexters

Clapham Sales  
28 Abbeville Road  
London  
SW4 9NG  
Sales  
020 8742 4140

Energy Rating: C. We aim to make our particulars both accurate and reliable. However they are not guaranteed; nor do they form part of an offer or contract. If you require clarification on any points then please contact us, especially if you're traveling some distance to view. Please note that appliances and heating systems have not been tested and therefore no warranties can be given as to their good working order.

**RICS** | Regulated  
Estate Agent  
and Letting Agent

dexters.co.uk