

Park Hill Road  
Clapham, SW4

Dexters







Park Hill Road  
Clapham

---













## About the property

Upon entering, the property immediately captivates with an elegant entrance hall, there are two large drawing rooms with Lincrusta and fibrous ceilings and hand-carved oak flooring. Beyond there is a guest cloakroom and the main entrance to the garden.

The lower ground floor hosts a breathtaking bespoke walnut kitchen featuring a range of integrated Miele appliances and a central island. Offering an excellent entertainment room and a brick wine cellar, the home further benefits from a comfort-cooled gym.

Each room looks onto an architecturally inspiring light well which provides access to the garden.

Over the upper floors, there are six bedrooms and four bathrooms. The principal bedroom has been beautifully finished with elegant luxury in mind, the spacious walk-through dressing room opens onto an en suite bathroom with a rain shower, roll-top bath and dual vanity.

Park Hill is situated within the Abbeville Village, renowned for its many boutique shops, bars and restaurants.



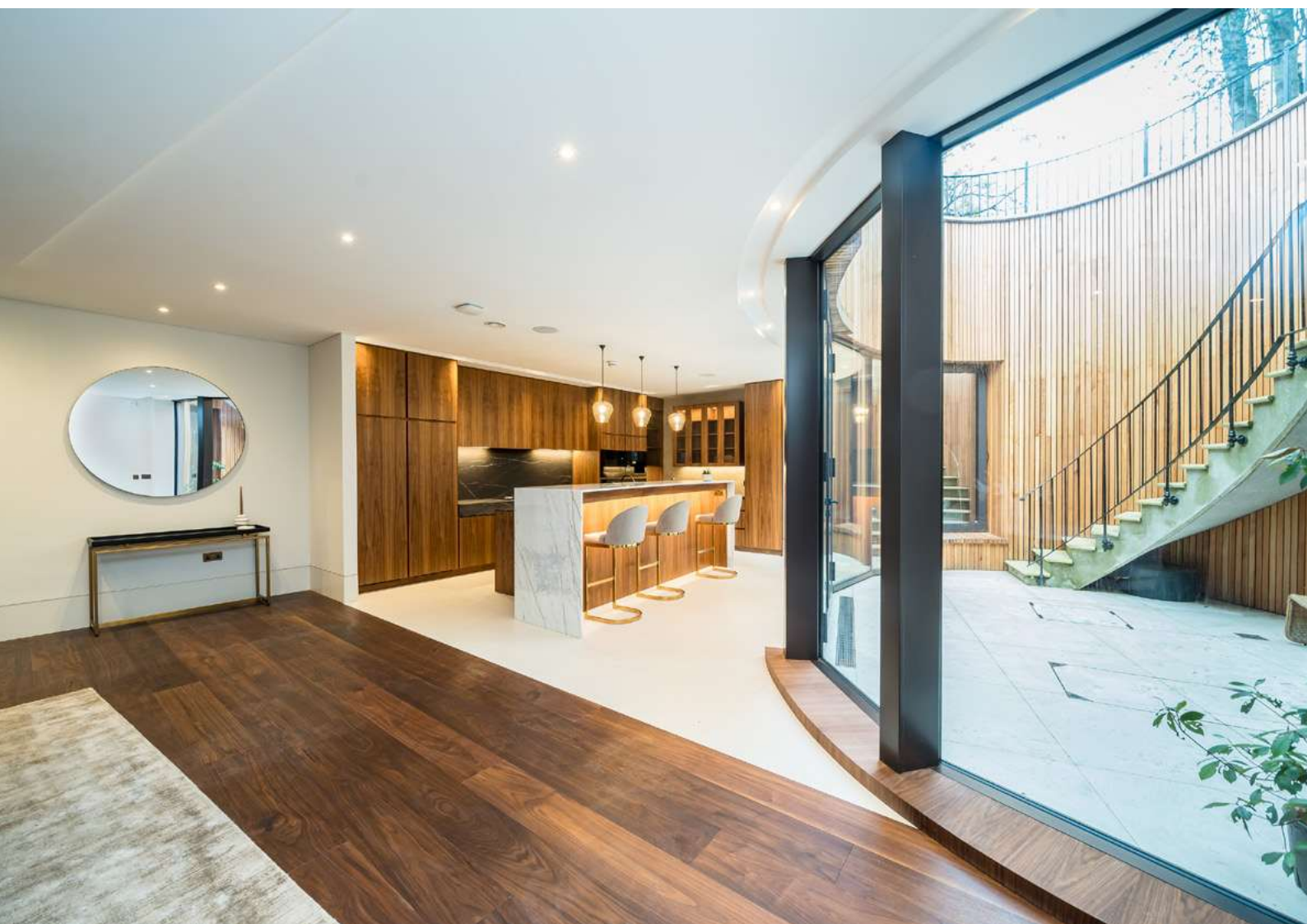


## Key features

Freehold  
Four Reception Rooms  
Six Bedrooms  
Four Bathrooms  
Media Room  
Gym

























TOTAL APPROX. FLOOR AREA 4,983.6 SQ. FT (463.0 SQ. M)

Energy Rating: C. We aim to make our particulars both accurate and reliable. However they are not guaranteed; nor do they form part of an offer or contract. If you require clarification on any points then please contact us, especially if you're travelling some distance to view. Please note that appliances and heating systems have not been tested and therefore no warranties can be given as to their good working order.



Dexters Clapham  
28 Abbeville Road,  
London, SW4 9NG  
020 8742 4140

# Dexters





Dexters