



**Elm Park, SW2**

**£1,175,000**

**Dexters**



## Elm Park, SW2

This elegant home is a testament to sophisticated living and superb design, providing extensive living and entertaining space over three floors with a large garden.

The ground floor comprises a double reception room with two fireplaces and a bay window, the kitchen/breakfast room is situated to the rear of the property and includes a range of integrated appliances and plenty of room to dine, bi-folding doors open onto a landscaped, low maintenance garden with an artificial lawn and mature border's.

Over the upper floors, there are four bedrooms and two bathrooms, including the principal bedroom, traditionally situated towards the front of the property.

Elm Park provides easy access to the many shops, bars and restaurants of central Brixton, the Victoria Line, National Rail and Brockwell Park. There are several excellent primary schools in the area, whilst JAGS, Alleyn's and Dulwich College are within easy reach.

### Features

- Freehold Home
- Double Reception Room
- Kitchen/Breakfast Room
- Four Bedrooms
- Two Bathrooms
- Landscaped Garden





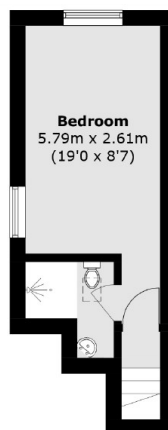
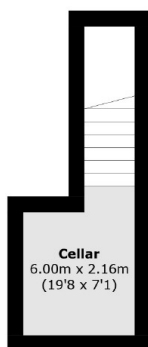






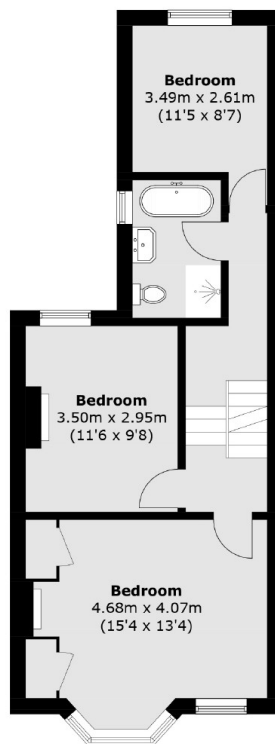
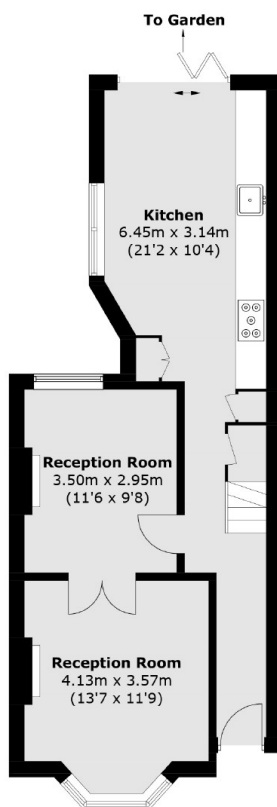


# Elm Park, London, SW2



**Basement**

**Second Floor**



**Ground Floor**

**First Floor**

Total area (approx.): 127.7 sq. m (1,374.5 sq. ft)  
(Including Basement)