



Lynette Avenue, SW4

£700,000

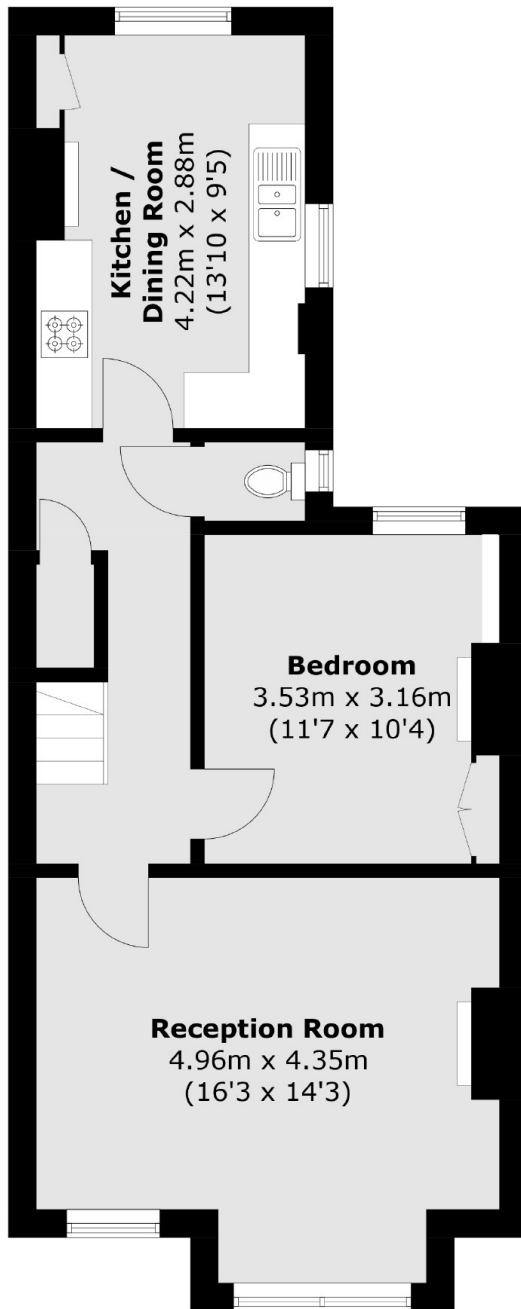
A highly sought-after and rarely available split-level period conversion situated moments from Clapham Common. The naturally bright and airy accommodation effortlessly blends functional living with impressive entertaining space. Comprising a large reception room with a bay window and an original fireplace, a separate, well-equipped kitchen with ample room to dine, two double bedrooms and a bathroom. . The property further benefits from a demised loft which offers the potential for extension subject to the regular permissions.

Lynette Avenue is situated within the extremely desirable Abbeville Village, an area renowned for its array of shops, bars and restaurants which are only a 2-minute walk away. Clapham South Station along with Clapham Common (Northern Line) are also conveniently located just a 3-minute walk away.

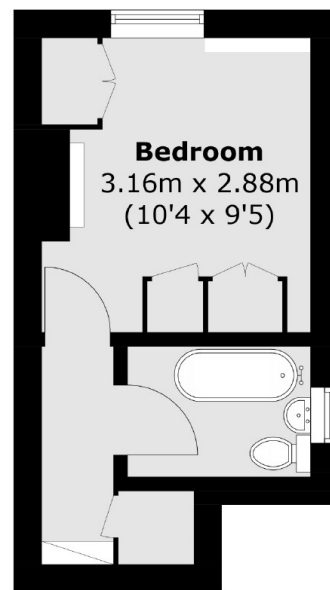
Features

- Period Conversion
- Large Reception Room
- Separate Kitchen
- Large loft space
- Superb Location
- Long Lease

Lynette Avenue, London, SW4



First Floor



Second Floor

Total area (approx.): 68.2 sq. m (734.1 sq. ft)