



Ritherdon Road, SW17

£2,150,000

Dexters



Ritherdon Road, SW17

A substantial freehold family home situated on one of the most desirable roads within the Heaver Estate. Extending to an impressive 3,086 sq.ft over four floors with a large south-facing garden.

The ground floor has been extended and opened to create a dramatically impressive living and entertaining space, comprising three reception areas and a large, well-equipped kitchen. Bi-folding doors open onto a beautiful, mature garden. The basement has been converted into two rooms, a utility and a media room, with the addition of a cloakroom.

Over the upper floors, there are five/six bedrooms and four bathrooms, including the principal bedroom which adjoins the adjacent room and can be used as either a dressing room or further bedroom. The property is offered to the market in suburb condition and chain-free.

Ritherdon Road is a popular tree-lined street located in the heart of the Heaver Estate. Balham Mainline and Underground stations are within easy reach as are the vast array of shops, bars and restaurants local to the area.

Features

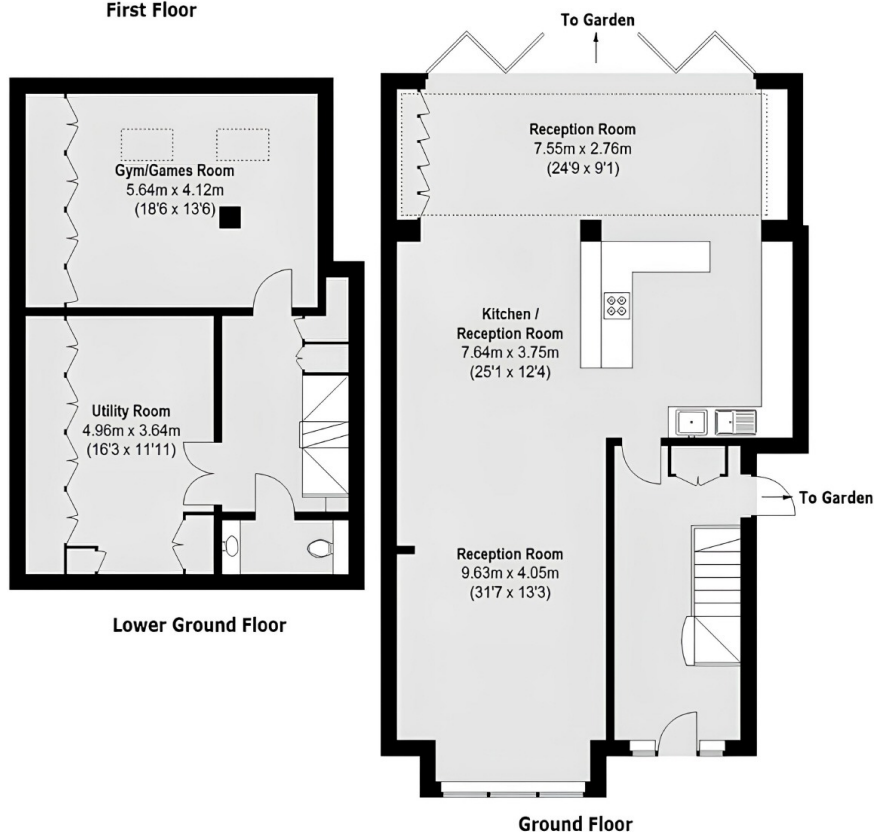
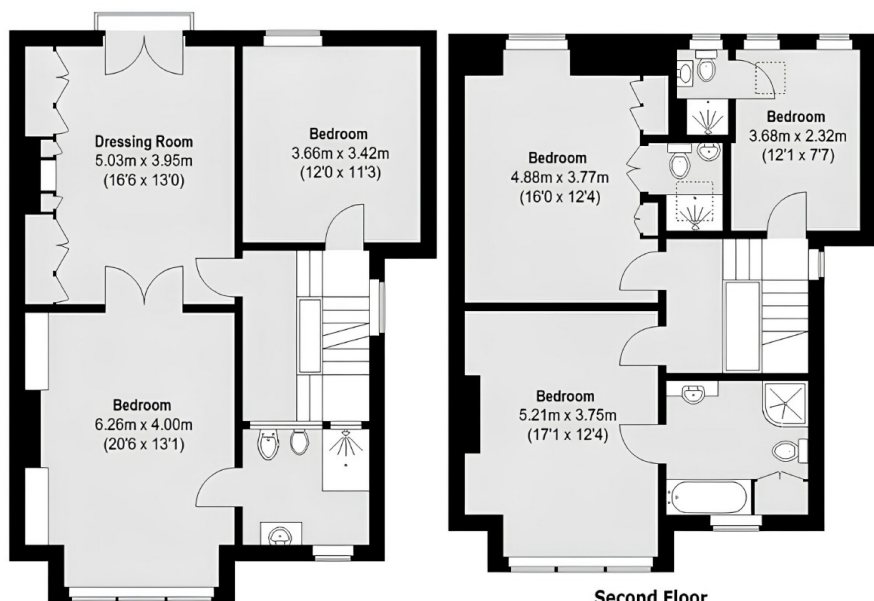
- Freehold Home
- Three Reception Rooms
- Five/Six Bedrooms
- Four Bathrooms
- Utility Room
- Large Garden







Ritherdon Road, London, SW17



Total area (approx.): 286.8 sq. m (3086.9 Sq. ft)

Dexters

Clapham Sales
28 Abbeville Road
London
SW4 9NG
Sales
020 8742 4140

Energy Rating: D. We aim to make our particulars both accurate and reliable. However they are not guaranteed; nor do they form part of an offer or contract. If you require clarification on any points then please contact us, especially if you're traveling some distance to view. Please note that appliances and heating systems have not been tested and therefore no warranties can be given as to their good working order.

RICS Regulated
Estate Agent
and Letting Agent

dexters.co.uk