



## Hambalt Road, SW4

£699,950

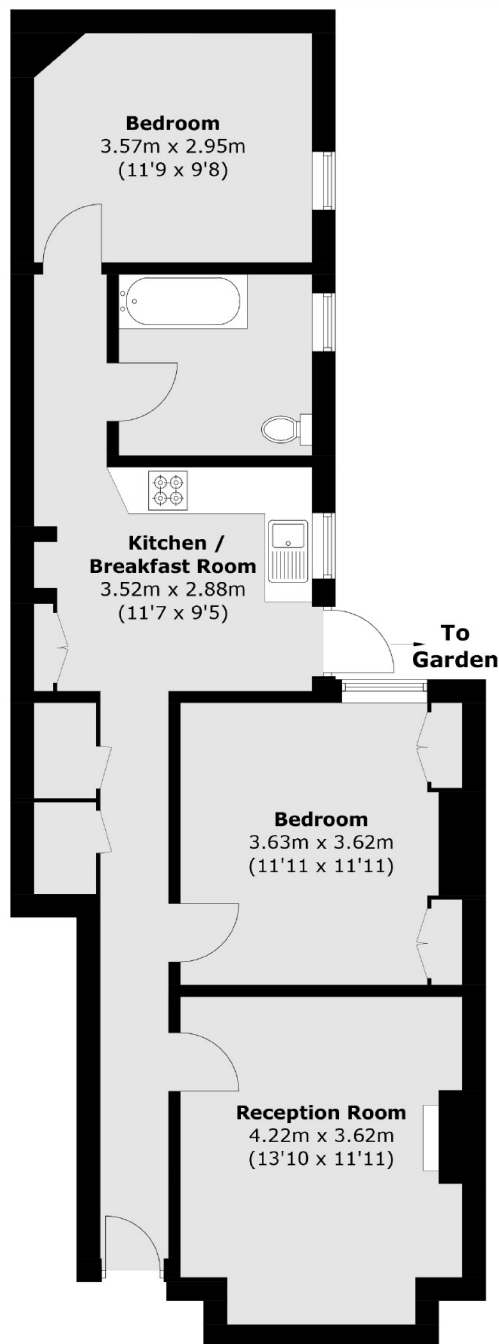
A charming ground-floor period maisonette presented in excellent order throughout, comprising a spacious reception room with a bay window and an original fireplace, a separate kitchen/breakfast room, two double bedrooms and a bathroom. Outside there is a private patio garden.

Hambalt Road is a desirable, quiet, tree residential street situated in the heart of the Abbeville Village, an area renowned for its boutique shops, bars and restaurants. The green open spaces of Clapham Common, along with two Northern Line Stations are just around the corner.

### Features

- Period Maisonette
- Reception Room
- Kitchen/Breakfast Room
- Two Bedrooms
- Chain Free

# Hambalt Road, London, SW4



Total area (approx.): 68.7 sq. m (739.4 sq. ft)