



Wandsworth Road, SW8

£575,000

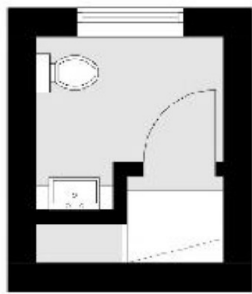
This extremely impressive, split-level period conversion provides an abundance of naturally bright and airy accommodation and has a contemporary 'Manhattan loft' feel. Comprising an open plan reception room with a vaulted ceiling, a modern kitchen and ample room to dine, two double bedrooms and a bathroom. Offered to the market chain free.

Situated on Wandsworth Road between North Street and Lambourn Road, the property is well located for Clapham Old Town, a highly desirable area renowned for its many shops, bars and restaurants. Clapham Common, along with its Underground station (Northern Line) and Wandsworth Road Overground station are a short stroll away.

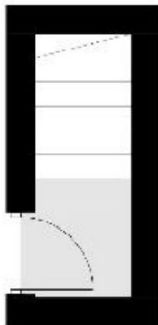
Features

- Split-Level Conversion
- Open Plan Reception Room
- Two Bedrooms
- Superb Location
- Long Lease
- Chain Free

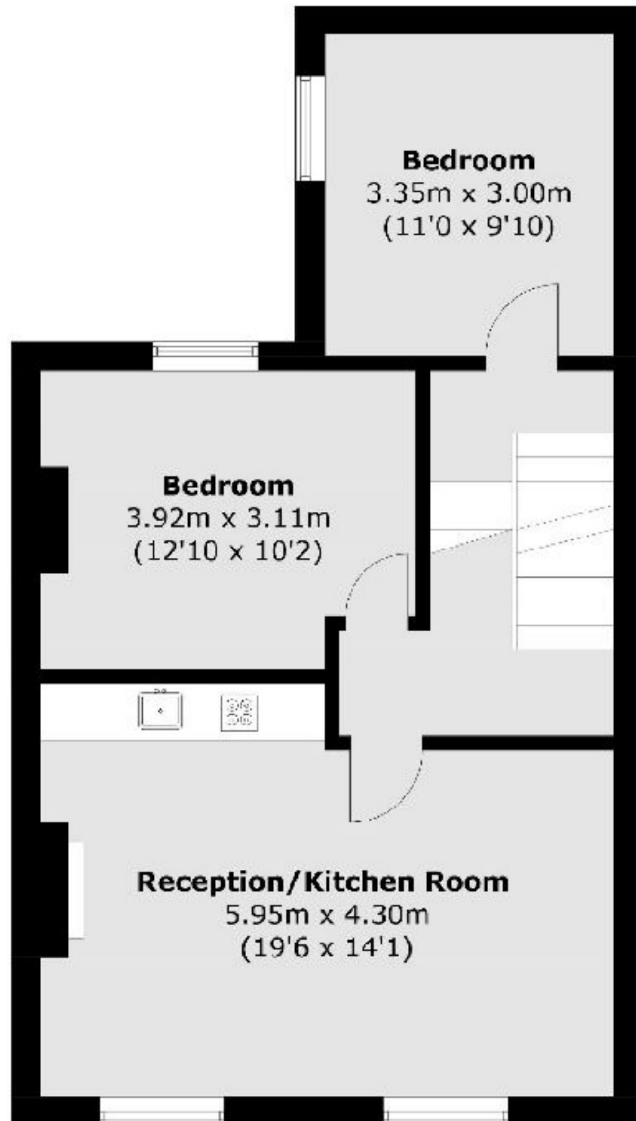
Wandsworth Road, London, SW8



Third Floor



First Floor



Second Floor

Total area (approx.): 62.4 sq. m (671.6 sq. ft)