



## Brailsford Road, SW2

£450,000

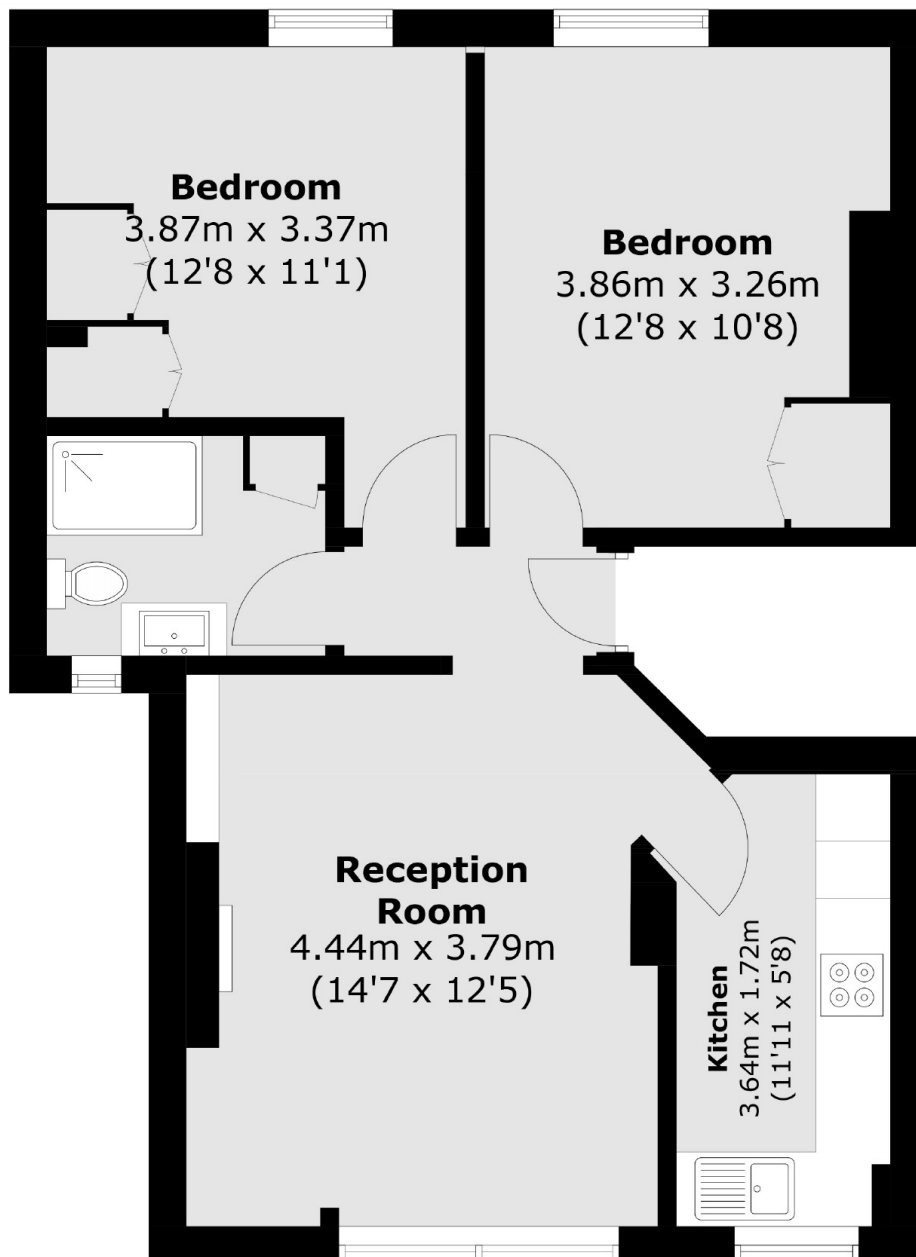
Set on the top floor, this spacious two bedroom flat has been recently decorated and on the doorstep Brockwell Park. The property is located on the top floor and overlooking Brockwell Park. Lovely green views of the park from bedroom windows, which gives a peaceful setting. Two good sized double bedrooms with a large separate reception and separate kitchen. The building also benefits from the Share of Freehold.

Ideally located just off of Tulse Hill, the property is a walk away from a Sainsbury's superstore and direct access to Brockwell Park. Brixton's Victoria line station is the closest tube.

### Features

- Two Double Bedrooms
- Share of Freehold
- Brockwell Park
- Separate Kitchen
- Modern Bathroom
- Close to Amenities

# Brailsford Road, London, SW2



Total area (approx.): 55.1 sq. m (593.1 sq. ft)