



## Bedford Road, SW4

£530,000

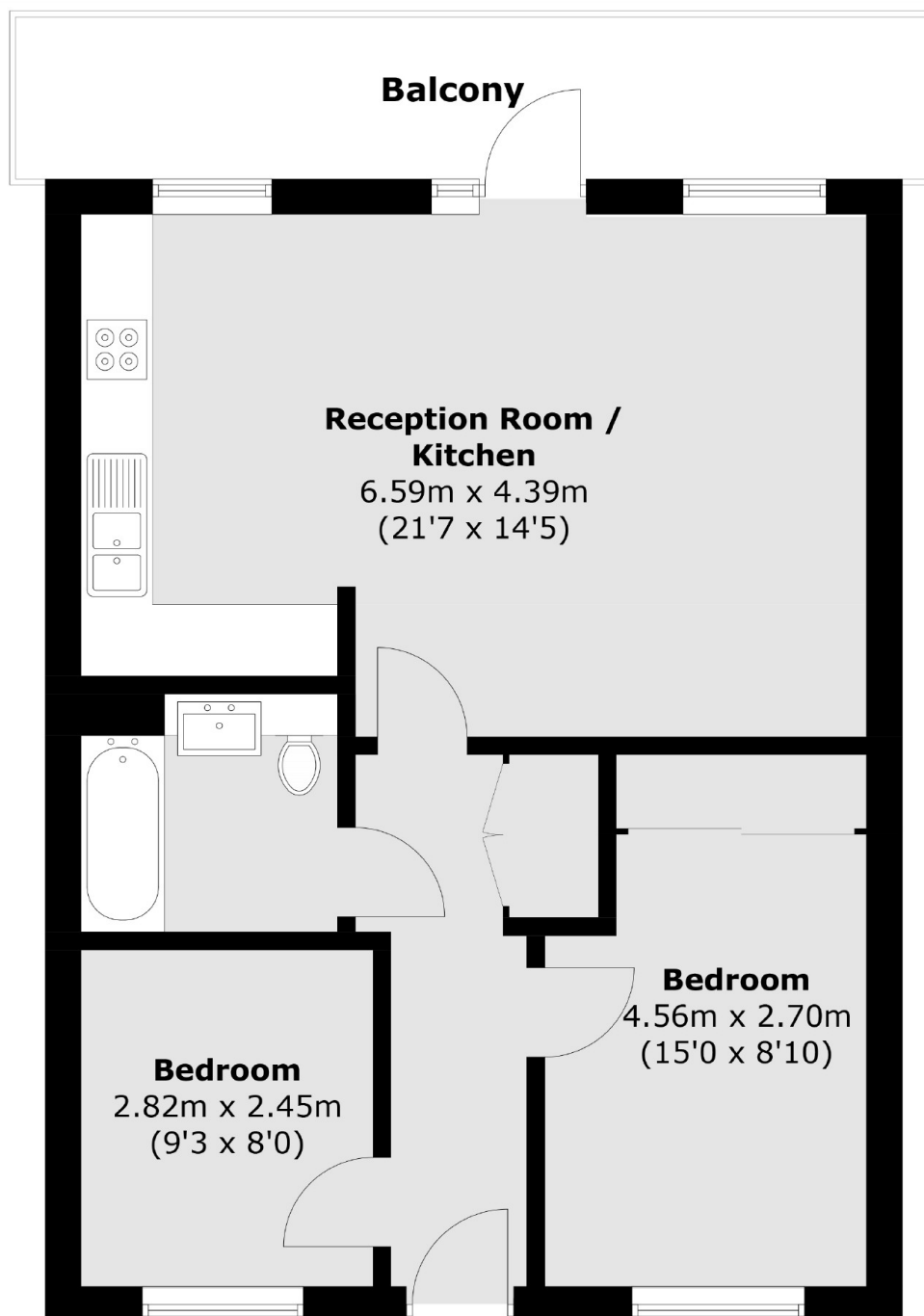
This contemporary apartment is situated on the top floor of a highly desirable development in the centre of Clapham. The immaculate accommodation comprises a large open-plan reception room with a modern kitchen, ample room to entertain, and a terrace, two double bedrooms, the principal having fitted wardrobes, a modern bathroom, and a utility area off the hallway. It is offered to the market chain-free.

Greenaway Apartments is ideally located for the many shops, restaurants and bars of Clapham High Street & Clapham Old Town, along with Clapham North Underground (Northern Line) and Clapham Common.

### Features

- Modern Apartment
- Open Plan Reception
- Integrated Kitchen
- Two Double Bedrooms
- Terrace
- Chain Free

# Bedford Road, London, SW4



Total area (approx):60.1 sq. m (647 sq. ft)