



## Slievemore Close, SW4

£820,000

A three-bedroom semi-detached freehold family home with a south-facing garden and access to communal off-street parking set within a private gated development off Clapham High Street.

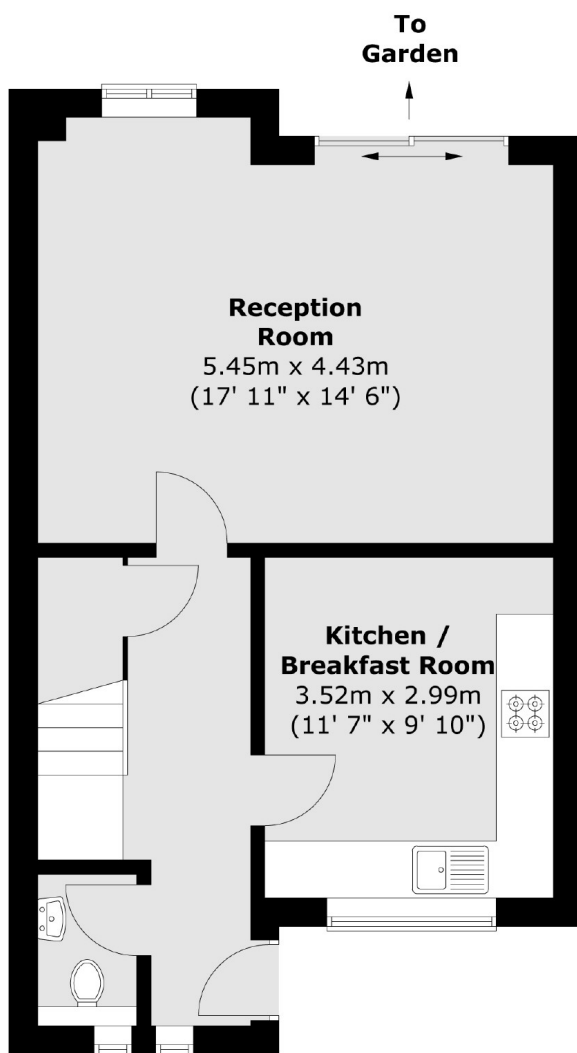
Slievemore Close is situated moments from the many shops, restaurants and bars of Clapham Old Town & Clapham High Street whilst the wide open spaces of Clapham Common, along with the station (Northern Line) are just around the corner.

### Features

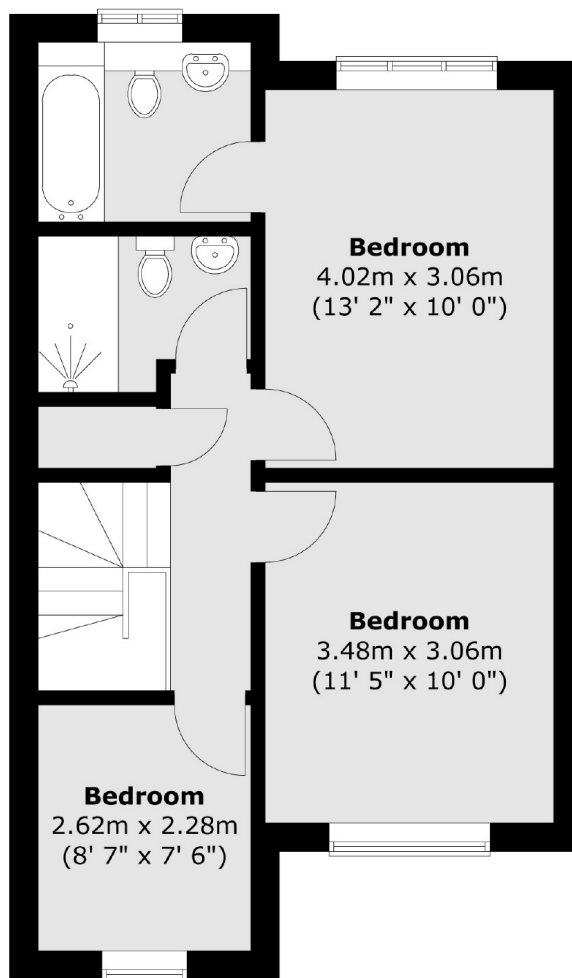
- Approx 1000 sq ft
- 26ft Reception Room
- Separate Kitchen
- Two Bathrooms
- South Facing Garden
- Potential to alter Layout

# Slievemore Close, London, SW4

## Ground Floor



## First Floor



Total area (approx.) : 93.5 sq. m (1006 sq. ft)