



Bedford Road, SW4

£600,000

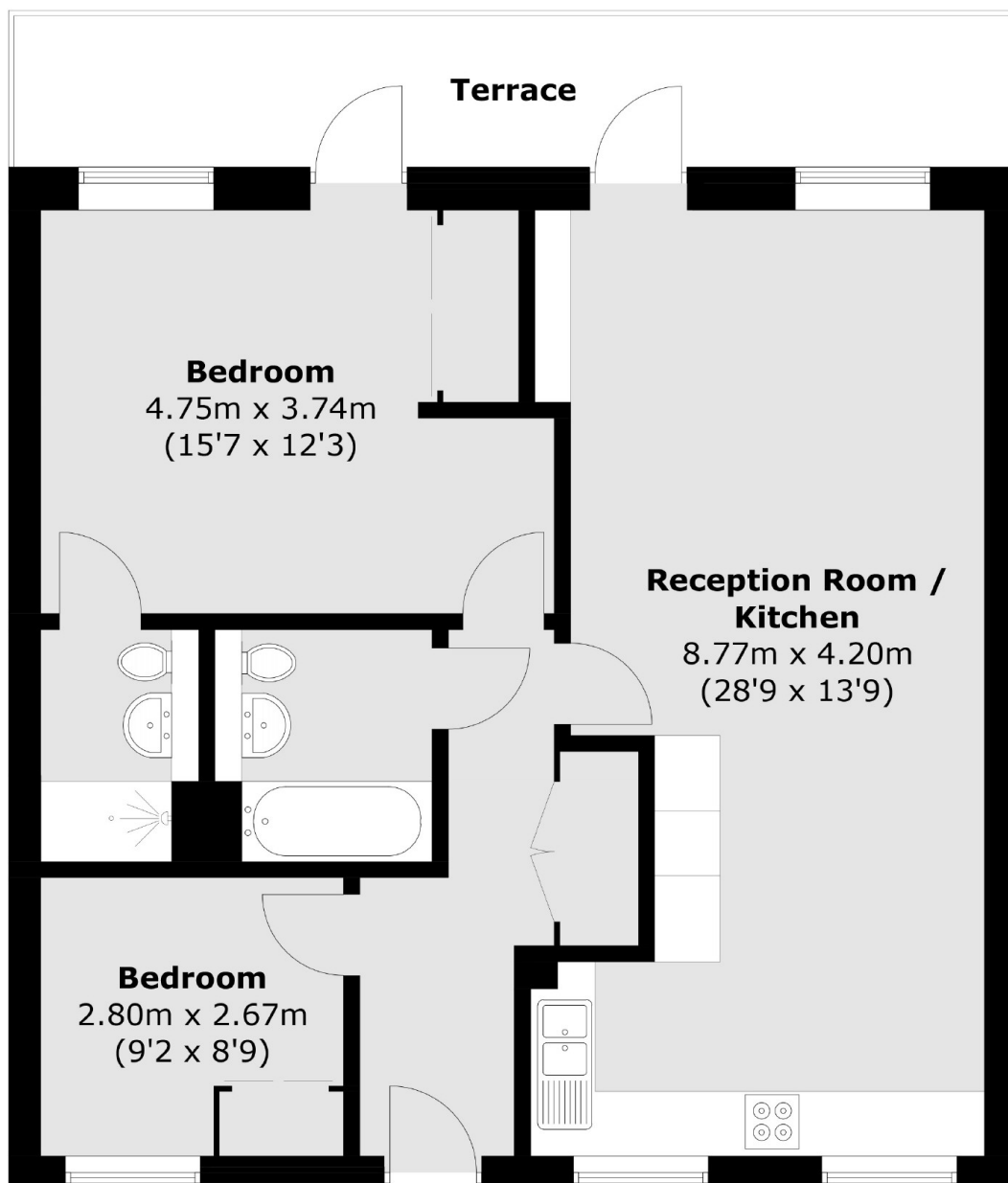
Offers In Excess Of. This contemporary top floor apartment is located within a sought after, private development and is immaculately presented throughout. The generously proportioned accommodation extends to 829 sq.ft and comprises an open plan reception room with modern kitchen and a balcony, two double bedrooms and two bathrooms.

Bedford Road is ideally located for the many shops, restaurants and bars of Clapham High Street & Clapham Old Town, along with Clapham North Underground (Northern Line) and Clapham Common.

Features

- Modern Apartment
- Open Plan Reception Room
- Two Double Bedrooms
- Two Bathrooms
- Balcony
- Long Lease

Bedford Road, London, SW4



Total area (approx.): 77.1 sq. m (829.9 sq. ft)
Terrace: 12.9 sq. m (138.8 sq. ft)