



Clapham Common South Side, £550,000

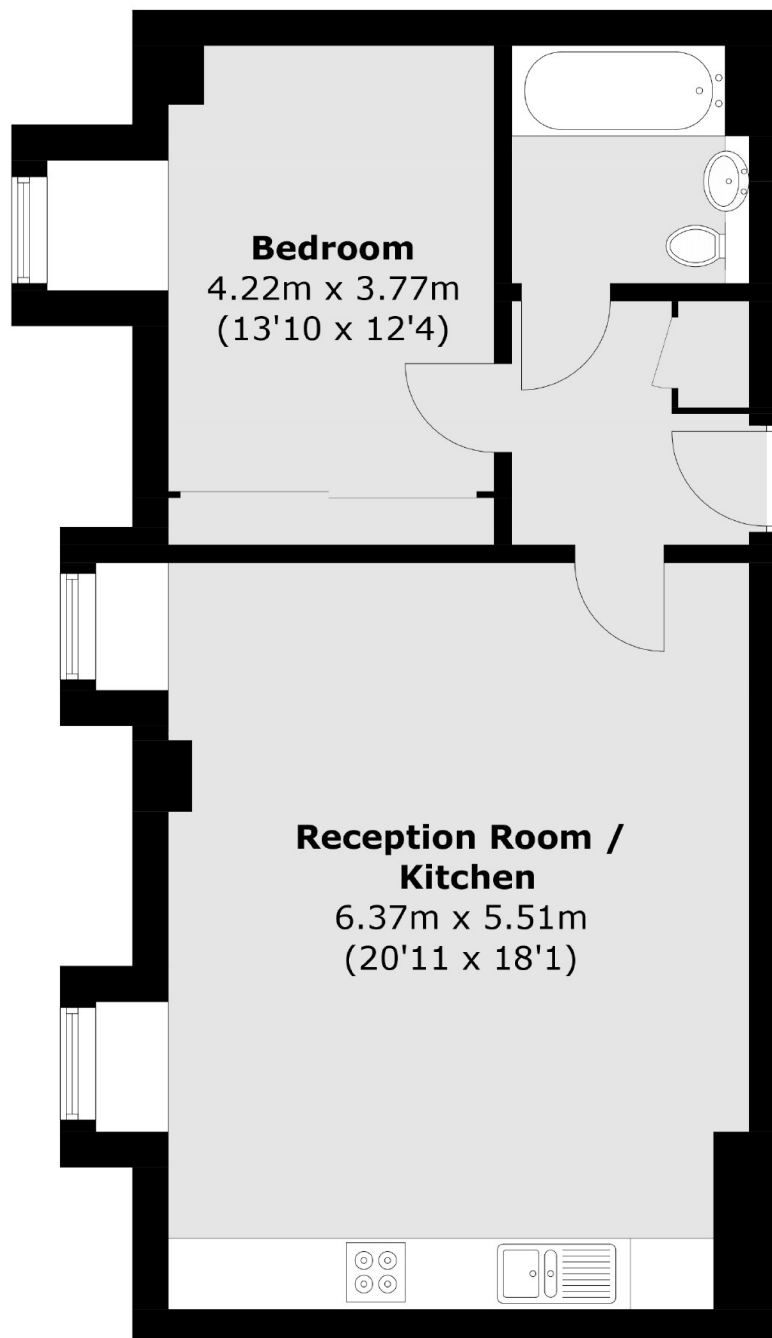
A first floor apartment situated within the prestigious Latitude Building overlooking Clapham Common. With high ceilings and large windows, the property has an incredible feeling of space and light throughout, impressing from the onset. Comprising a large open plan reception room with a comfortable seating area, ample room to dine/entertain and a modern, integrated kitchen with a wide selection of attractive wall and base units; a generously proportioned double bedroom with fitted wardrobes and a contemporary bathroom. The property also has allocated, underground parking and a building concierge.

Situated on Clapham Common South Side, the property is ideally located for easy access to the many shops, bars and restaurants of the Abbeville Village, Nightingale Triangle & Balham Hill. Transport links are superb with Clapham South Underground Station located just over the road.

Features

- Lateral Apartment
- Open Plan Reception Room
- Modern Kitchen
- Double Bedroom
- Allocated Underground Parking
- Building Concierge

Clapham Common South Side, London, SW4



Total area (approx.): 54.9 sq. m (590.9 sq. ft)