



## Elms Crescent, SW4

£600,000

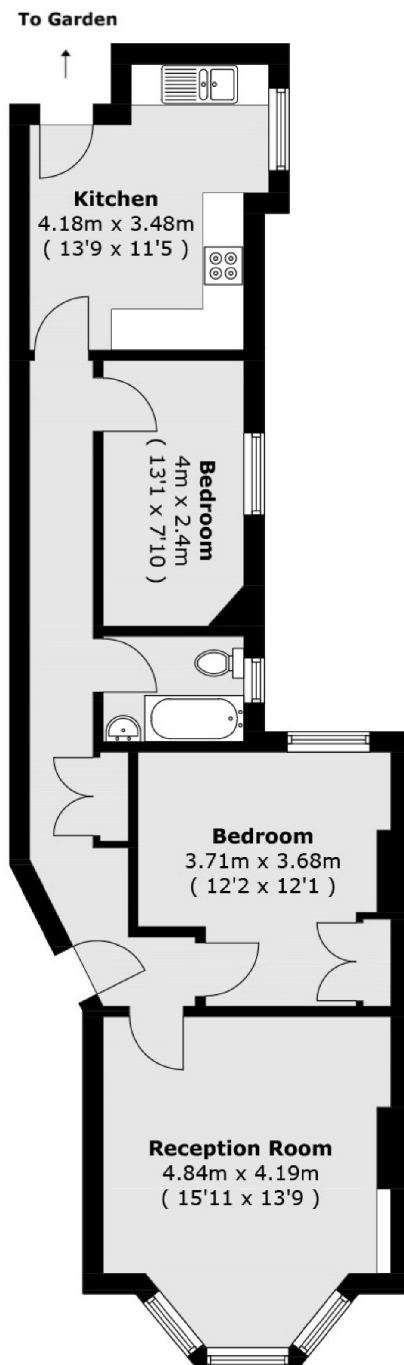
A superb ground-floor apartment located within a sought-after mansion block in the heart of the Abbeville Village. The accommodation has been thoughtfully arranged to balance living with entertaining space flawlessly. Comprising a spacious reception room with a large bay window and recessed alcoves, a well-equipped kitchen/breakfast room, two double bedrooms and a bathroom. Being on the ground floor, the property benefits from direct access to the large communal garden.

Elms Crescent is a tree lined street moments from the many local shops, restaurants and cafés of Abbeville Village, with Clapham South & Common stations, along with the common itself just a short stroll away.

### Features

- Mansion Apartment
- Large Reception Room
- Separate Kitchen
- Two Bedrooms
- Communal Garden
- Permit Parking

# Elms Crescent, London, SW4



Total area (approx.): 67.6 sq. m (727.6 sq. ft)