



Abbeville Road, SW4

£350,000

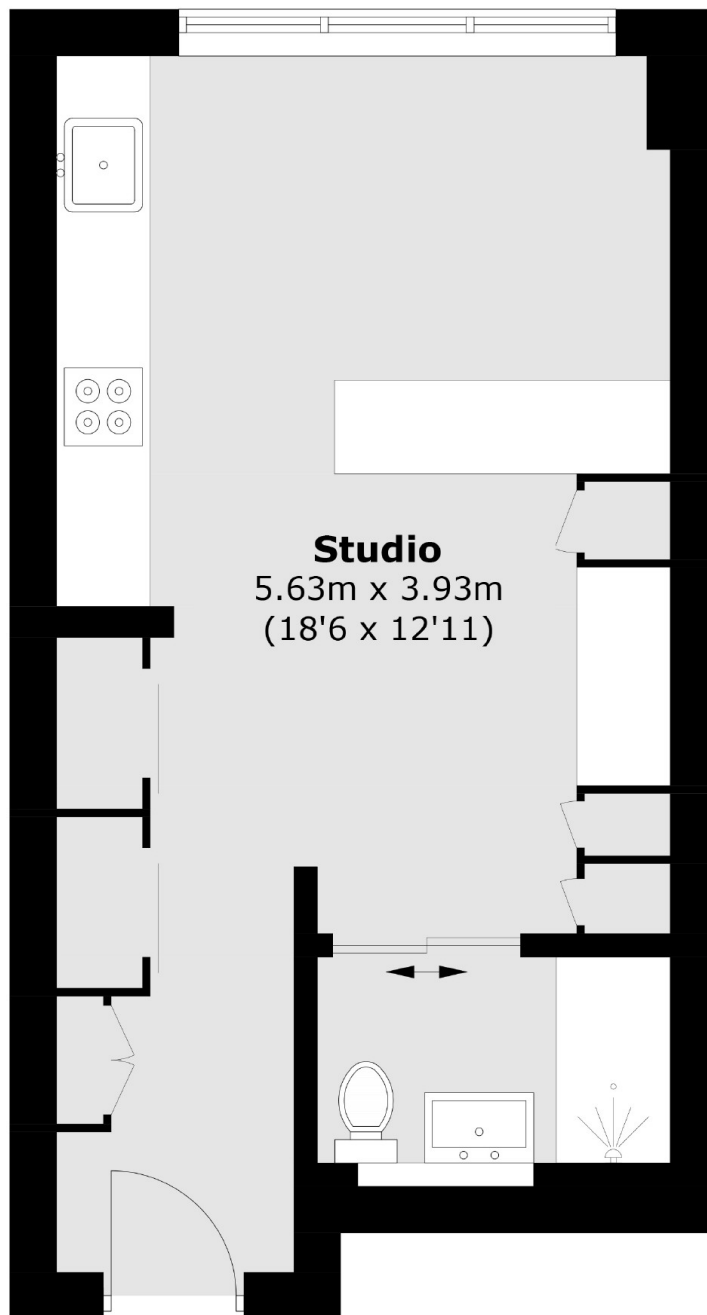
Offer In Excess Of. An impressive ground apartment situated in a contemporary development with a sunny garden aspect, ideal for first time buyers, investors and those seeking the perfect pied-à-terre.

Abbeville Road is a tree-lined street within the desirable Abbeville Village, renowned for its wide array of shops, bars and restaurants, relaxed atmosphere and proximity to Clapham Common and the Northern Line which provides access to the City & West End in under 30 minutes.

Features

- Italian Designed Kitchen
- Siemens Appliances
- Built In Storage
- Large Communal Garden
- Secure Bike Storage
- Underfloor Heating

Abbeville Road, London, SW4



Total area (approx): 30.19 sq. m (325 sq. ft)