



Edgeley Road, SW4

£650,000

A contemporary, split-level modern apartment extending to an impressive 894 sq.ft. The bright and spacious accommodation includes an open-plan reception room with an adjoining, integrated kitchen, two double bedrooms with fitted wardrobes and two bathrooms. Outside there is a private balcony and a vast communal terrace.

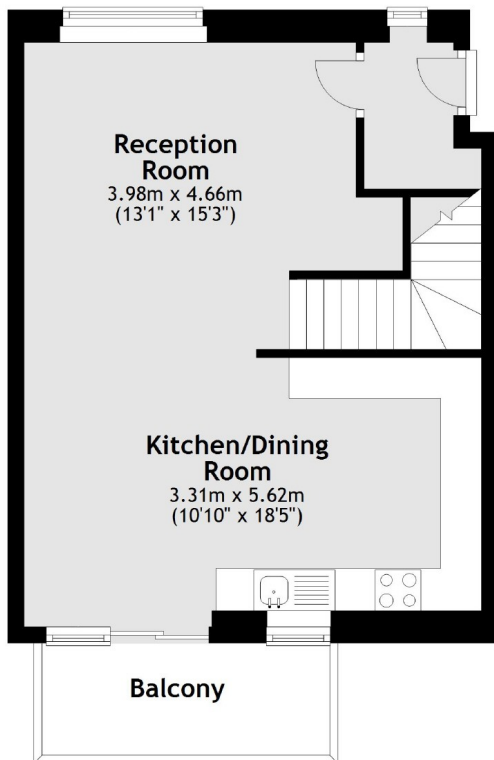
Edgeley Road is situated moments from the many shops, restaurants and bars of Clapham Old Town & Clapham High Street. The wide open spaces of Clapham Common just a short walk away.

Features

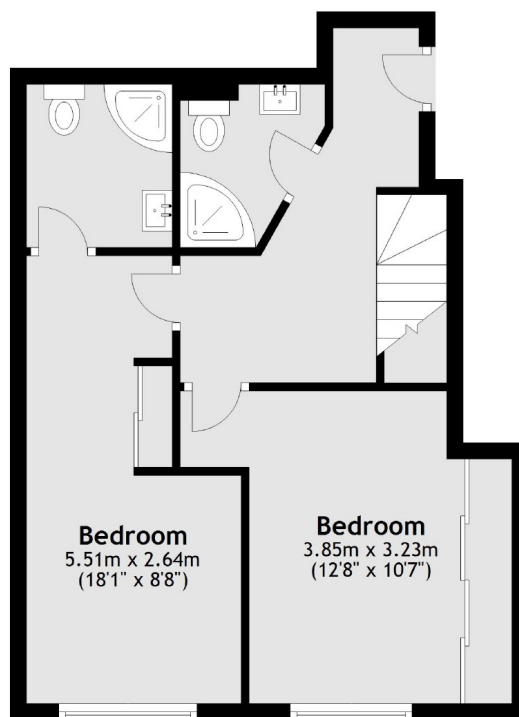
- Open Plan Reception
- Modern Kitchen
- Two Double Bedrooms
- Two Bathrooms
- Balcony
- Communal Roof Terrace

Edgeley Road, London, SW4

Ground Floor



Lower Ground Floor



Main area: Approx. 83.1 sq. metres (894.5 sq. feet)
Plus balconies, approx. 5.2 sq. metres (56.4 sq. feet)