

Bicycle Mews, SW4

£475,000

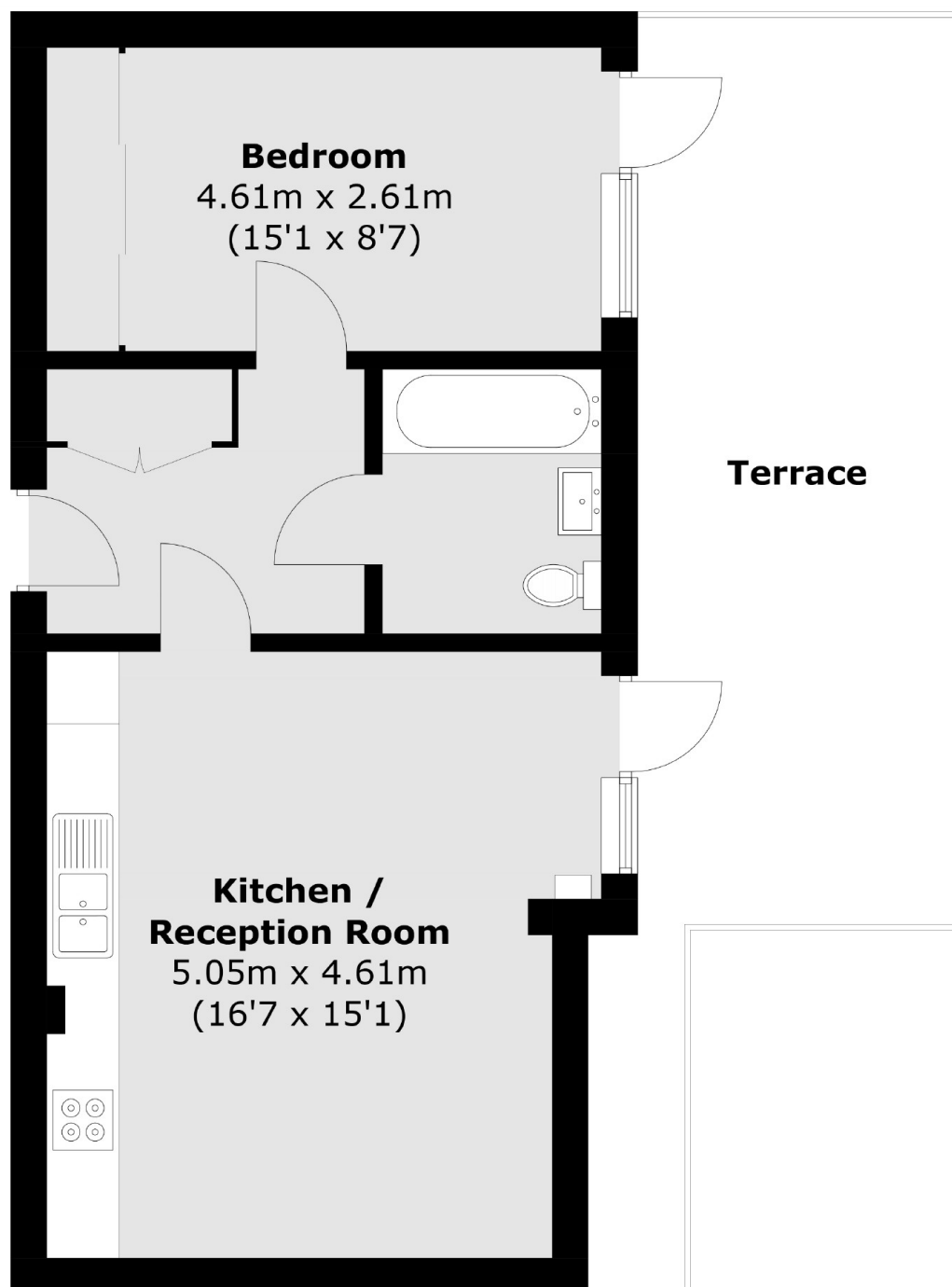
Tucked away on the top floor of a secure building just off Clapham High Street, this large one-bedroom apartment is the ideal pied-à-terre, rental property, or home for first-time buyers. The apartment features an open-plan reception/kitchen, a private roof terrace offering great views of the city, and a spacious double bedroom with fitted wardrobes.

Located round the corner from Clapham High Street, with all its shops, bars and restaurants, as well as Clapham North tube and Clapham High Street overground.

Features

- Top floor
- Private terrace with views of City Skyline
- Long lease
- Communal roof terrace
- Central location

Bicycle Mews, London, SW4



Total area (approx.): 45.6 sq. m (490.8 sq. ft)
Terrace: 22.4 sq. m (241.1 sq. ft)