



Abbeville Road, SW4

£800,000

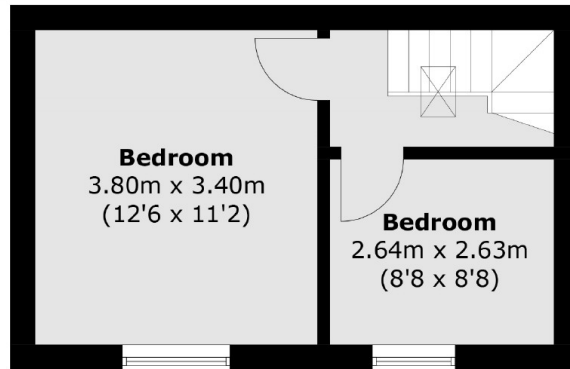
A rarely available freehold house located within an attractive private gated mews with a large garden in the centre of Abbeville Village. The accommodation is well designed with an impressive entrance hall and stairway, a sociable eat-in kitchen, reception room, two bedrooms and a newly renovated bathroom. Offered to the market with no onward chain.

Abbeville Road is a tree-lined street within the desirable Abbeville Village, renowned for its wide array of shops, bars and restaurants, relaxed atmosphere and proximity to Clapham Common and the Northern Line. There are also a number of excellent schools and nurseries within walking distance.

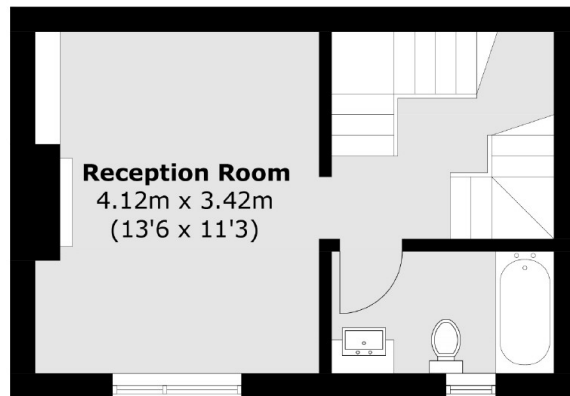
Features

- Private Mews
- Freehold House
- Spacious Reception Room
- Two Bedrooms
- Large Garden
- Chain Free

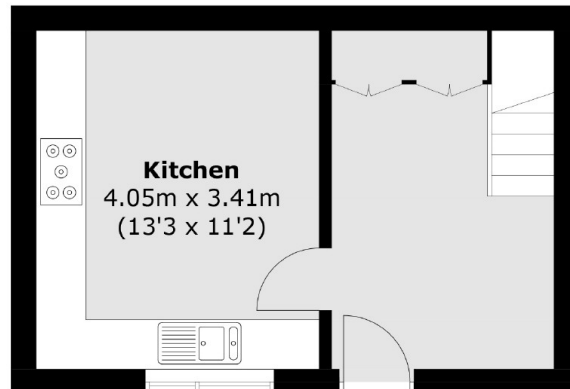
Abbeville Road, London, SW4



Second Floor



First Floor



Ground Floor

Total area (approx): 80 sq.m (861 sq.ft)