

Electric Avenue, SW9

£275,000

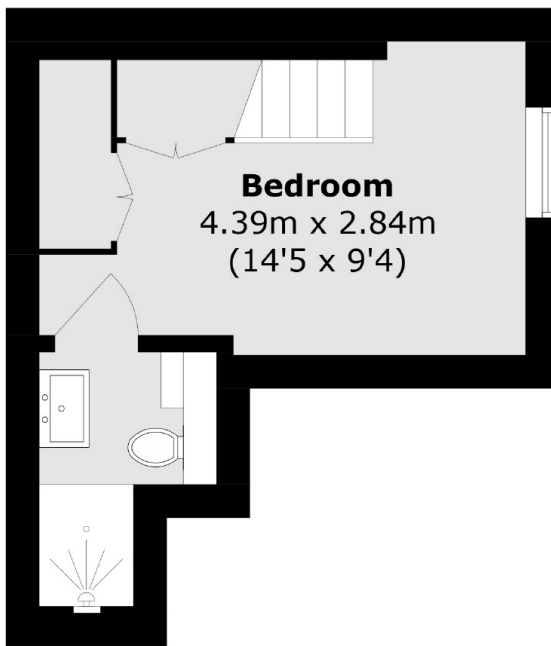
A beautifully presented one double bedroom property that's arranged over two floors and located in the very heart of Brixton Town Centre.

Electric Avenue is ideally located moments from the tube offering journey times in to central London of 12 minutes to Oxford Circus and 20 minutes to Bank.

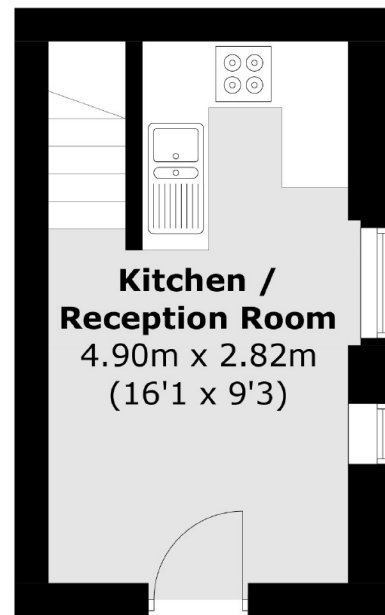
Features

Split Level
Open Plan
Double Bedroom
Great Condition
No Chain
Great First Time Purchase

Electric Avenue, London, SW9



Ground Floor



First Floor

Total area (approx.): 28.3 sq. m (304.6 sq. ft)