

## Electric Avenue, SW9

£299,999

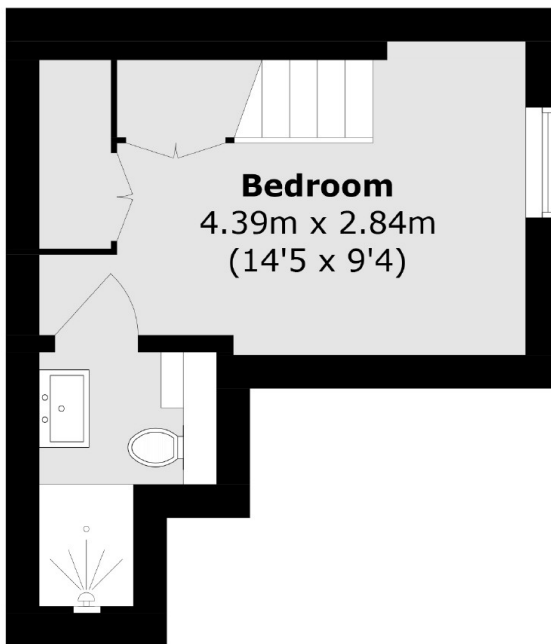
A beautifully presented one double bedroom property that's arranged over two floors and located in the very heart of Brixton Town Centre.

Electric Avenue is ideally located moments from the tube offering journey times in to central London of 12 minutes to Oxford Circus and 20 minutes to Bank.

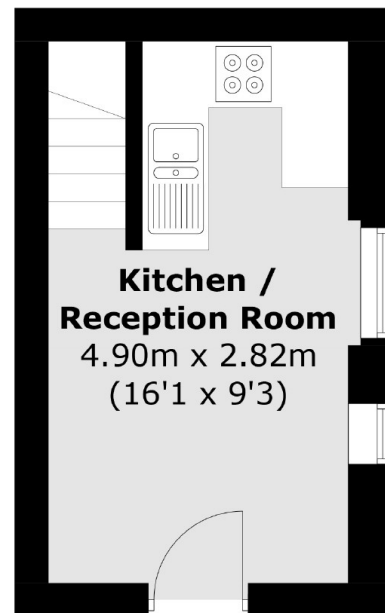
### Features

- Split Level
- Open Plan
- Double Bedroom
- Great Condition
- No Chain
- Great First Time Purchase

# Electric Avenue, London, SW9



**Ground Floor**



**First Floor**

Total area (approx.): 28.3 sq. m (304.6 sq. ft)