



Ostade Road, SW2

£395,000

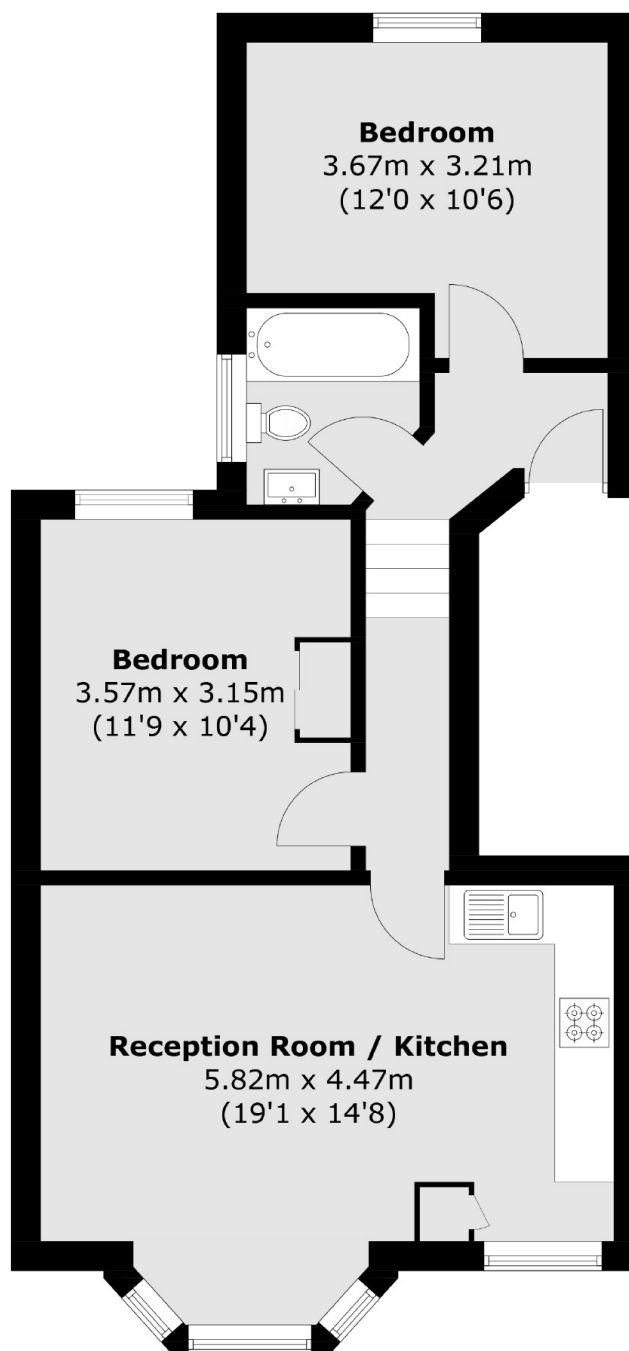
Two double bedroom split level period conversion flat with open plan reception room in a popular location near Brixton Town Centre.

Ostade Road is a residential street located between Brixton Hill and Streatham Hill not too far from Brockwell Park, so ideal for access to the many local shops and supermarkets as well the park itself.

Features

- Victorian Conversion
- Split Level
- 19ft Open Plan Reception
- Two Double Bedrooms
- Great Location
- No Chain

Ostade Road, London, SW2



First Floor

Total area (approx.): 55.5 sq. m (597.4 sq. ft)

Dexters

Clapham Sales
28 Abbeville Road
London
SW4 9NG
Sales
020 8742 4140

Energy Rating: C. We aim to make our particulars both accurate and reliable. However they are not guaranteed; nor do they form part of an offer or contract. If you require clarification on any points then please contact us, especially if you're traveling some distance to view. Please note that appliances and heating systems have not been tested and therefore no warranties can be given as to their good working order.

 **RICS** | Regulated
Estate Agent
and Letting Agent

[dexters.co.uk](https://www.dexters.co.uk)